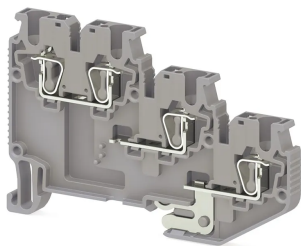


КЛЕММНЫЕ БЛОКИ > ПРУЖИННЫЕ КЛЕММНЫЕ БЛОКИ > КЛЕММЫ ДАТЧИКОВ



SRD 2,5_2ST

Артикул (SKU): 311659

Клемма Cage Clamp 2,5 мм², трёхуровневая сенсорная (с заземлением)

Коммерческая информация

Код продажи продукта	311659
Единица Упаковки	50 шт.
Номер таможенного тарифа	853690950000
Вес за единицу, включая упаковку	0.01224 kg.

Техническая информация

PRODUCT FEATURES	
Number of Connections	4
Color	Grey
Number of Levels	3
Insulation Material	PA
UL 94 Flammability Class	V0
Impulse Voltage Category	III
Insulation Material Group	I
Pollution Degree	3
Protective Conductor Type	PE
Connection According to Standard	IEC 60947-7-1/IEC 60947-7-2
Fire Protection In Railway Vehicles Din En 45545 2 R22 R23 R24 R26	HL1 - HL2 - HL3
Continuous Operating Temperature max.	130 °C
Continuous Operating Temperature min.	-60 °C

ELECTRICAL FEATURES

Nominal Impulse Voltage	4 Kv
Nominal Current	24 A
Nominal Voltage	250 V
Maximum Load Current	32 A

CONNECTION DATA

Connection Type	Spring Connection
Single-core min. conductor cross-section	0,08 mm²
Single-core max. conductor cross-section	4 mm²
Conductor Cross Section Awgkcmil Min	28 AWG
Conductor Cross Section Awgkcmil Max	12 AWG
Multi-core min. conductor cross-section	0,14 mm²
Multi-core max. conductor cross-section	2,5 mm²
Multi-core min. conductor cross-section with ferrule	0,14 mm²
Multi-core max. conductor cross-section with ferrule	2,5 mm²
2 Conductors Of The Same Cross Section Multi Core Twin Ferrule With Plastic Sleeve Max	0,5 mm²
Min. Stripping Length	8 mm
Max. Stripping Length	10 mm
Internal cylindrical indicator	A3

DIMENSIONS

Width	5,2 mm
Length	74,30 mm
Height Mr 35X75	49 mm
Height MR 35x15	56,50 mm