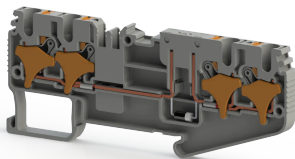


КЛЕММНЫЕ БЛОКИ > КЛЕММНЫЕ КОЛОДКИ С ВСТАВНЫМ КРЕПЛЕНИЕМ >
КЛЕММЫ ДЛЯ ЭЛЕКТРОННЫХ КОМПОНЕНТОВ



PRD 2.5 CAD-A Серый

Артикул (SKU): 328329

Клемма push-in 2,5 мм² с кнопкой, 2 входа-2 выхода,
размыкаемая (диод)

Коммерческая информация

Код продажи продукта	328329
Единица Упаковки	50 шт.
Номер таможенного тарифа	853690950000

Техническая информация

PRODUCT FEATURES	
Number of Connections	4
Color	Grey
Number of Levels	1
Insulation Material	PA
UL 94 Flammability Class	V0
Impulse Voltage Category	III
Insulation Material Group	I
Pollution Degree	3
Connection According to Standard	IEC 60947-7-1
Fire Protection In Railway Vehicles Din En 45545 2 R22 R23 R24 R26	HL1 - HL2 - HL3
Continuous Operating Temperature max.	130 °C
Continuous Operating Temperature min.	-60 °C
Note	Max. current is determined by the diode. 1N 4007 diode, reverse voltage

ELECTRICAL FEATURES

Nominal Impulse Voltage	6 Kv
Nominal Current	1 A
Nominal Voltage	500 V

CONNECTION DATA

Connection Type	Push-In Connection
Single-core min. conductor cross-section	0,08 mm²
Single-core max. conductor cross-section	4 mm²
Conductor Cross Section Awgkcmil Min	28 AWG
Conductor Cross Section Awgkcmil Max	12 AWG
Multi-core min. conductor cross-section	0,14 mm²
Multi-core max. conductor cross-section	2,5 mm²
Multi-core min. conductor cross-section with ferrule	0,14 mm²
Multi-core max. conductor cross-section with ferrule	2,5 mm²
2 Conductors Of The Same Cross Section Multi Core Twin Ferrule With Plastic Sleeve Min	0,5 mm²
2 Conductors Of The Same Cross Section Multi Core Twin Ferrule With Plastic Sleeve Max	mm²
Min. Stripping Length	8 mm
Max. Stripping Length	10 mm
Internal cylindrical indicator	A3

DIMENSIONS

Width	5,2 mm
Length	91,30 mm
Height Mr 35X75	37,30 mm
Height MR 35x15	44,80 mm