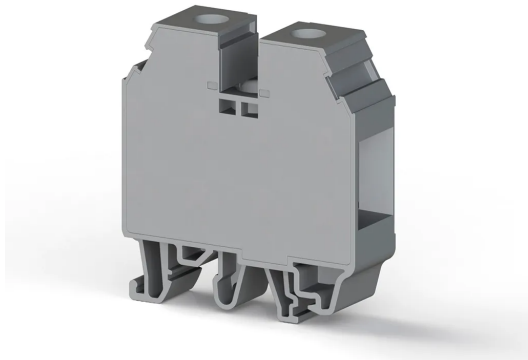


КЛЕММНЫЕ БЛОКИ > ВИНТОВЫЕ КЛЕММНЫЕ БЛОКИ > ПРОХОДНЫЕ КЛЕММЫ



AVK 35 RD Серый

Артикул (SKU): 304250

Винтовая проходная клемма 35 мм² для рейки MR 32

Коммерческая информация

Код продажи продукта	304250
Единица Упаковки	40 шт.
Номер таможенного тарифа	853690950000
Вес за единицу, включая упаковку	0.051475 kg.

Техническая информация

PRODUCT FEATURES

Number of Connections	2
Color	Grey
Number of Levels	1
Insulation Material	PA
UL 94 Flammability Class	V2
Impulse Voltage Category	III
Insulation Material Group	I
Pollution Degree	3
Connection According to Standard	IEC 60947-7-1
Continuous Operating Temperature max.	120 °C
Continuous Operating Temperature min.	-55 °C

ELECTRICAL FEATURES

Nominal Impulse Voltage	8 Kv
-------------------------	-------------

Nominal Current	125 A
Nominal Voltage	750 V
Maximum Load Current	125 A

CONNECTION DATA

Connection Type	Screw Connection
Single-core min. conductor cross-section	1,5 mm²
Single-core max. conductor cross-section	50 mm²
Conductor Cross Section Awgkcmil Min	16 AWG
Conductor Cross Section Awgkcmil Max	2 AWG
Multi-core min. conductor cross-section	1,5 mm²
Multi-core max. conductor cross-section	50 mm²
Multi-core min. conductor cross-section with ferrule	1,5 mm²
Multi-core max. conductor cross-section with ferrule	35 mm²
2 Conductors Of The Same Cross Section Multi Core Twin Ferrule With Plastic Sleeve Min	1,5 mm²
2 Conductors Of The Same Cross Section Multi Core Twin Ferrule With Plastic Sleeve Max	16 mm²
Min. Stripping Length	16 mm
Max. Stripping Length	18 mm
Internal cylindrical indicator	B9
Tightening Torque Min	2,5 Nm
Tightening Torque Max	3 Nm

DIMENSIONS

Width	16 mm
Length	52,80 mm
Height Mr 35X75	58,70 mm
Height MR 35x15	66,20 mm
Height Mr 32	mm