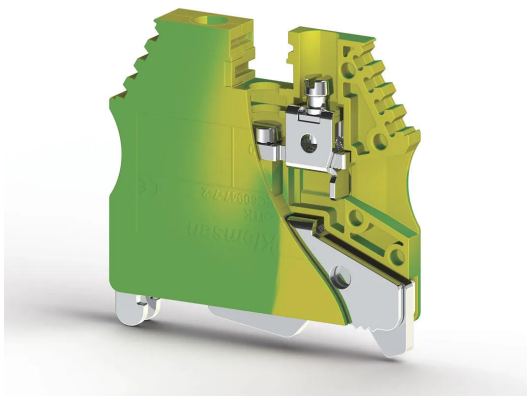


КЛЕММНЫЕ БЛОКИ > ВИНТОВЫЕ КЛЕММНЫЕ БЛОКИ > ЗАЗЕМЛЯЮЩИЕ КЛЕММЫ



AVK 2,5-4TK Жёлто-зелёный

Артикул (SKU): 334450

Винтовая заземляющая клемма 2,5/4 мм²

Коммерческая информация

Код продажи продукта	334450
Единица Упаковки	50 шт.
Номер таможенного тарифа	853690950000
Вес за единицу, включая упаковку	0.02 kg.

Техническая информация

PRODUCT FEATURES	
Number of Connections	2
Color	Yellow/Green
Number of Levels	1
Insulation Material	PA
UL 94 Flammability Class	V2
Impulse Voltage Category	III
Insulation Material Group	I
Pollution Degree	3
Protective Conductor Type	PE
Connection According to Standard	IEC 60947-7-2
Continuous Operating Temperature max.	120 °C
Continuous Operating Temperature min.	-55 °C

Note

**DIN raylarının akım tasıma kapasitesine dikkat edilmeli.
Observe the current carrying capacity of the DIN rails.**

ELECTRICAL FEATURES

Nominal Impulse Voltage **8 Kv**

CONNECTION DATA

Connection Type **Screw Connection**

Single-core min. conductor cross-section **0,2 mm²**

Single-core max. conductor cross-section **6 mm²**

Conductor Cross Section Awgkcmil Min **24 AWG**

Conductor Cross Section Awgkcmil Min **kcmil**

Conductor Cross Section Awgkcmil Max **10 AWG**

Multi-core min. conductor cross-section **0,2 mm²**

Multi-core max. conductor cross-section **6 mm²**

Multi-core min. conductor cross-section with ferrule **0,25 mm²**

Multi-core max. conductor cross-section with ferrule **4 mm²**

2 Conductors Of The Same Cross Section Multi Core Twin Ferrule With Plastic Sleeve Min **0,5 mm²**

2 Conductors Of The Same Cross Section Multi Core Twin Ferrule With Plastic Sleeve Max **2,5 mm²**

Min. Stripping Length **9 mm**

Max. Stripping Length **10 mm**

Internal cylindrical indicator **A4**

Tightening Torque Min **0,5 Nm**

Tightening Torque Max **0,8 Nm**

Rail Tightening Torque Min **0,4 Nm**

Rail Tightening Torque Max **0,6 Nm**

DIMENSIONS

Width **6 mm**

Length **42 mm**

Height Mr 35X75 **44,50 mm**

Height MR 35x15

52,0 mm
