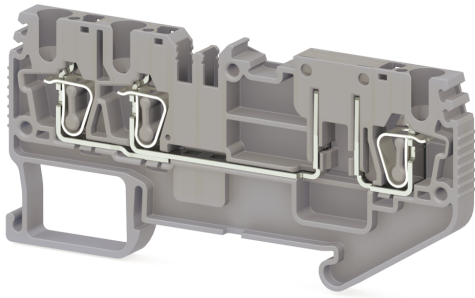


КЛЕММНЫЕ БЛОКИ > ПРУЖИННЫЕ КЛЕММНЫЕ БЛОКИ > МНОГОПРОВОДНЫЕ
КЛЕММНЫЕ БЛОКИ



SRD 2,5EAK Серый

Артикул (SKU): 311309

Cage Clamp, 2,5 мм² 1 вход-2 выхода разъединяющая (внутренне соединенная)

Коммерческая информация

| | |
|----------------------------------|---------------------|
| Код продажи продукта | 311309 |
| Единица Упаковки | 50 шт. |
| Номер таможенного тарифа | 853690950000 |
| Вес за единицу, включая упаковку | 0.01788 kg. |

Техническая информация

| PRODUCT FEATURES | |
|--|------------------------|
| Number of Connections | 3 |
| Color | Grey |
| Number of Levels | 1 |
| Insulation Material | PA |
| UL 94 Flammability Class | V0 |
| Impulse Voltage Category | III |
| Insulation Material Group | I |
| Pollution Degree | 3 |
| Connection According to Standard | IEC 60947-7-1 |
| Fire Protection In Railway Vehicles Din En 45545 2 R22 R23 R24 R26 | HL1 - HL2 - HL3 |
| Continuous Operating Temperature max. | 130 °C |
| Continuous Operating Temperature min. | -60 °C |

ELECTRICAL FEATURES

| | |
|-------------------------|--------------|
| Nominal Impulse Voltage | 6 Kv |
| Nominal Current | 20 A |
| Nominal Voltage | 500 V |

CONNECTION DATA

| | |
|--|----------------------------|
| Connection Type | Spring Connection |
| Single-core min. conductor cross-section | 0,08 mm² |
| Single-core max. conductor cross-section | 4 mm² |
| Conductor Cross Section Awgkcmil Min | 28 AWG |
| Conductor Cross Section Awgkcmil Max | 12 AWG |
| Multi-core min. conductor cross-section | 0,14 mm² |
| Multi-core max. conductor cross-section | 2,5 mm² |
| Multi-core min. conductor cross-section with ferrule | 0,14 mm² |
| Multi-core max. conductor cross-section with ferrule | 2,5 mm² |
| 2 Conductors Of The Same Cross Section Multi Core Twin Ferrule With Plastic Sleeve Max | 0,5 mm² |
| Min. Stripping Length | 8 mm |
| Max. Stripping Length | 10 mm |
| Internal cylindrical indicator | A3 |

DIMENSIONS

| | |
|-----------------|-----------------|
| Width | 5,2 mm |
| Length | 78,30 mm |
| Height Mr 35X75 | 38,90 mm |
| Height MR 35x15 | 46,40 mm |