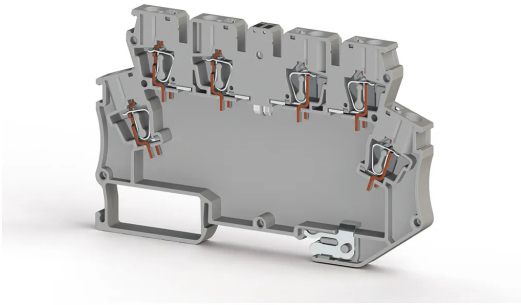


ЭЛЕКТРОННАЯ ПРОДУКЦИЯ > ЭЛЕКТРОННЫЕ МОДУЛИ > ЭЛЕКТРОННЫЕ
КЛЕММНЫЕ БЛОКИ



MDB 6E Серый

Артикул (SKU): 327099

*Cage Clamp, 6-полюсная с светопроводом и заземлением
(пластиковый корпус)*

Коммерческая информация

Код продажи продукта	327099
Единица Упаковки	20 шт.
Номер таможенного тарифа	853630300000
Вес за единицу, включая упаковку	0.017 kg.

Техническая информация

PRODUCT FEATURES	
Number of Connections	6
Color	Grey
Number of Levels	2
Insulation Material	PA
UL 94 Flammability Class	V2
Impulse Voltage Category	III
Insulation Material Group	I
Pollution Degree	3
Protective Conductor Type	PE
Connection According to Standard	IEC 60947-7-1
Continuous Operating Temperature max.	120 °C
Continuous Operating Temperature min.	-55 °C

ELECTRICAL FEATURES

Nominal Impulse Voltage	8 Kv
Nominal Current	32 A
Nominal Voltage	800 V

CONNECTION DATA

Connection Type	Spring Connection
Single-core min. conductor cross-section	0,08 mm²
Single-core max. conductor cross-section	4 mm²
Conductor Cross Section Awgkcmil Min	28 AWG
Conductor Cross Section Awgkcmil Max	12 AWG
Multi-core min. conductor cross-section	0,08 mm²
Multi-core max. conductor cross-section	2,5 mm²
Multi-core min. conductor cross-section with ferrule	0,14 mm²
Multi-core max. conductor cross-section with ferrule	2,5 mm²
Min. Stripping Length	8 mm
Max. Stripping Length	10 mm
Internal cylindrical indicator	A3
2 Conductors Of The Same Cross Section Multi Core Twin Ferrule With Plastic Sleeve	0,5 mm²

DIMENSIONS

Width	6,2 mm
Length	100,5 mm
Height Mr 35X75	63,5 mm
Height MR 35x15	71 mm