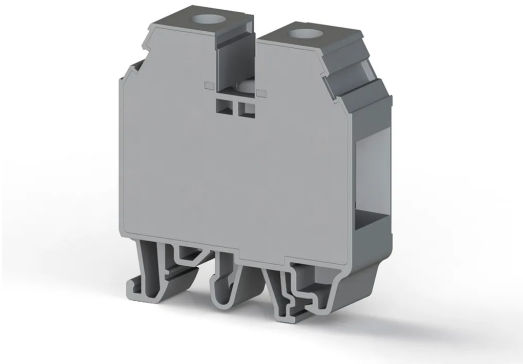


КЛЕММНЫЕ БЛОКИ > ВИНТОВЫЕ КЛЕММНЫЕ БЛОКИ > ПРОХОДНЫЕ КЛЕММЫ



AVK 35 RD PV Серый

Артикул (SKU): 304250P

Винтовая клемма, 35 мм² фотогальваническая (1000 В)

Коммерческая информация

Код продажи продукта	304250P
Единица Упаковки	40 шт.
Номер таможенного тарифа	853690950000
Вес за единицу, включая упаковку	0.051475 kg.

Техническая информация

PRODUCT FEATURES	
Number of Connections	2
Color	Grey
Number of Levels	1
Insulation Material	PA
UL 94 Flammability Class	V0
Impulse Voltage Category	III
Insulation Material Group	I
Pollution Degree	3
Connection According to Standard	IEC 60947-7-1
Continuous Operating Temperature max.	130 °C
Continuous Operating Temperature min.	-60 °C
ELECTRICAL FEATURES	
Nominal Impulse Voltage	8 Kv

Nominal Current	125 A
Nominal Voltage	750 V
Maximum Load Current	125 A

CONNECTION DATA

Connection Type	Screw Connection
Single-core min. conductor cross-section	1,5 mm²
Single-core max. conductor cross-section	50 mm²
Conductor Cross Section Awgkcmil Min	16 AWG
Conductor Cross Section Awgkcmil Max	2 AWG
Multi-core min. conductor cross-section	1,5 mm²
Multi-core max. conductor cross-section	50 mm²
Multi-core min. conductor cross-section with ferrule	1,5 mm²
Multi-core max. conductor cross-section with ferrule	35 mm²
2 Conductors Of The Same Cross Section Multi Core Twin Ferrule With Plastic Sleeve Min	1,5 mm²
2 Conductors Of The Same Cross Section Multi Core Twin Ferrule With Plastic Sleeve Max	16 mm²
Min. Stripping Length	16 mm
Max. Stripping Length	18 mm
Internal cylindrical indicator	B9
Tightening Torque Min	2,5 Nm
Tightening Torque Max	3,5 Nm

DIMENSIONS

Width	16 mm
Length	52,80 mm
Height Mr 35X75	58,70 mm
Height MR 35x15	66,20 mm
Height Mr 32	mm