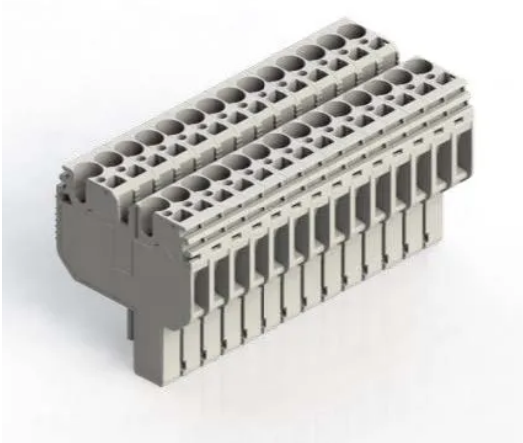


КЛЕММНЫЕ БЛОКИ > ПРУЖИННЫЕ КЛЕММНЫЕ БЛОКИ > ПРОХОДНЫЕ КЛЕММЫ



SG-PT 2,5DB/14 Серый

Артикул (SKU): 310699

Розеточная клемма, 2,5 мм² (под StoP Series)

Коммерческая информация

| | |
|----------------------------------|---------------------|
| Код продажи продукта | 310699 |
| Единица Упаковки | 10 шт. |
| Номер таможенного тарифа | 853690950000 |
| Вес за единицу, включая упаковку | 0.078 kg. |

Техническая информация

| PRODUCT FEATURES | |
|--|--------------------------------|
| Number of Connections | 14 |
| Color | Grey |
| Number of Levels | 2 |
| Insulation Material | PA |
| UL 94 Flammability Class | V0 |
| Impulse Voltage Category | III |
| Insulation Material Group | I |
| Pollution Degree | 3 |
| Connection According to Standard | IEC 61984/IEC 60947-7-1 |
| Fire Protection In Railway Vehicles Din En 45545 2 R22 R23 R24 R26 | HL 1 - HL 2 - HL 3 |
| Continuous Operating Temperature max. | 130 °C |

| | |
|---------------------------------------|---------------|
| Continuous Operating Temperature min. | -60 °C |
|---------------------------------------|---------------|

ELECTRICAL FEATURES

| | |
|-------------------------|--------------|
| Nominal Impulse Voltage | 6 Kv |
| Nominal Current | 24 A |
| Nominal Voltage | 500 V |
| Maximum Load Current | 24 A |

CONNECTION DATA

| | |
|--|----------------------------|
| Connection Type | Spring Connection |
| Single-core min. conductor cross-section | 0,08 mm² |
| Single-core max. conductor cross-section | 4 mm² |
| Conductor Cross Section Awgkcmil Min | 28 AWG |
| Conductor Cross Section Awgkcmil Max | 12 AWG |
| Multi-core min. conductor cross-section | 0,14 mm² |
| Multi-core max. conductor cross-section | 2,5 mm² |
| Multi-core min. conductor cross-section with ferrule | 0,14 mm² |
| Multi-core max. conductor cross-section with ferrule | 2,5 mm² |
| 2 Conductors Of The Same Cross Section Multi Core Twin Ferrule With Plastic Sleeve Min | 0,5 mm² |
| Min. Stripping Length | 8 mm |
| Max. Stripping Length | 10 mm |
| Internal cylindrical indicator | A3 |

DIMENSIONS

| | |
|--------|-----------------|
| Width | 72,8 mm |
| Length | 34,60 mm |
| Height | 41,90 mm |