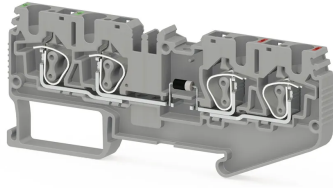


КЛЕММНЫЕ БЛОКИ > ПРУЖИННЫЕ КЛЕММНЫЕ БЛОКИ > КЛЕММЫ ДЛЯ ЭЛЕКТРОННЫХ КОМПОНЕНТОВ



SRD 4CD_A серый

Артикул (SKU): 311749

4 мм² клемма Cage Clamp 4-полюсная для компонентов (диод)

Коммерческая информация

Код продажи продукта	311749
Единица Упаковки	50 шт.
Номер таможенного тарифа	853690950000
Вес за единицу, включая упаковку	0.0152 kg.

Техническая информация

PRODUCT FEATURES	
Number of Connections	4
Color	Grey
Number of Levels	1
Insulation Material	PA
UL 94 Flammability Class	V0
Impulse Voltage Category	III
Insulation Material Group	I
Pollution Degree	3
Connection According to Standard	IEC 60947-7-1
Fire Protection In Railway Vehicles Din En 45545 2 R22 R23 R24 R26	HL 1 - HL 2 - HL 3
Continuous Operating Temperature max.	130 °C
Continuous Operating Temperature min.	-60 °C
Note	Max. current is determined by the diode. 1N 4007 diode, reverse voltage

ELECTRICAL FEATURES

Nominal Impulse Voltage	8 Kv
Nominal Current	1 A
Nominal Voltage	800 V

CONNECTION DATA

Connection Type	Spring Connection
Single-core min. conductor cross-section	0,08 mm²
Single-core max. conductor cross-section	6 mm²
Conductor Cross Section Awgkcmil Min	28 AWG
Conductor Cross Section Awgkcmil Max	10 AWG
Multi-core min. conductor cross-section	0,14 mm²
Multi-core max. conductor cross-section	4 mm²
Multi-core min. conductor cross-section with ferrule	0,14 mm²
Multi-core max. conductor cross-section with ferrule	4 mm²
Min. Stripping Length	8 mm
Max. Stripping Length	10 mm
Internal cylindrical indicator	A4
2 Conductors Of The Same Cross Section Multi Core Twin Ferrule With Plastic Sleeve	1 mm²

DIMENSIONS

Width	6,2 mm
Length	93 mm
Height Mr 35X75	38,3 mm
Height MR 35x15	45,8 mm