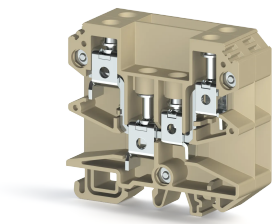


КЛЕММНЫЕ БЛОКИ > ВИНТОВЫЕ КЛЕММНЫЕ БЛОКИ > ПРОХОДНЫЕ КЛЕММЫ



## AYK 10/16

Артикул (SKU): 395100

Сквозная клеммная колодка винтового типа, 10-16 мм<sup>2</sup>

### Коммерческая информация

Код продажи продукта	<b>395100</b>
Единица Упаковки	<b>20 шт.</b>
Номер таможенного тарифа	<b>853690950000</b>
Вес за единицу, включая упаковку	<b>0.0468 kg.</b>

### Техническая информация

PRODUCT FEATURES	
Number of Connections	<b>4</b>
Color	<b>Beige</b>
Number of Levels	<b>1</b>
Insulation Material	<b>PA</b>
UL 94 Flammability Class	<b>V2</b>
Impulse Voltage Category	<b>III</b>
Insulation Material Group	<b>I</b>
Pollution Degree	<b>3</b>
Connection According to Standard	<b>IEC 60947-7-1</b>
Continuous Operating Temperature max.	<b>120 °C</b>
Continuous Operating Temperature min.	<b>-55 °C</b>
ELECTRICAL FEATURES	
Nominal Impulse Voltage	<b>8 Kv</b>
Nominal Current	<b>76 A</b>

Nominal Voltage	<b>750 V</b>
Maximum Load Current	<b>76 A</b>

## CONNECTION DATA

Connection Type	<b>Screw Connection</b>
Single-core min. conductor cross-section	<b>2.5mm<sup>2</sup> / 0.5mm<sup>2</sup> mm<sup>2</sup></b>
Single-core max. conductor cross-section	<b>25mm<sup>2</sup> / 16mm<sup>2</sup> mm<sup>2</sup></b>
Conductor Cross Section Awgkcmil Min	<b>14 AWG / 20 AWG AWG</b>
Conductor Cross Section Awgkcmil Max	<b>4 AWG / 6 AWG AWG</b>
Multi-core min. conductor cross-section	<b>4mm<sup>2</sup> / 0.5mm<sup>2</sup> mm<sup>2</sup></b>
Multi-core max. conductor cross-section	<b>25mm<sup>2</sup> / 16mm<sup>2</sup> mm<sup>2</sup></b>
Multi-core min. conductor cross-section with ferrule	<b>2.5mm<sup>2</sup> / 0.5mm<sup>2</sup> mm<sup>2</sup></b>
Multi-core max. conductor cross-section with ferrule	<b>16mm<sup>2</sup> / 10mm<sup>2</sup> mm<sup>2</sup></b>
2 Conductors Of The Same Cross Section Multi Core Twin Ferrule With Plastic Sleeve Min	<b>1.5mm<sup>2</sup> / 0.5mm<sup>2</sup> mm<sup>2</sup></b>
2 Conductors Of The Same Cross Section Multi Core Twin Ferrule With Plastic Sleeve Max	<b>10mm<sup>2</sup> / 6mm<sup>2</sup> mm<sup>2</sup></b>
Min. Stripping Length	<b>14mm / 8mm mm</b>
Max. Stripping Length	<b>16mm / 10mm mm</b>
Internal cylindrical indicator	<b>B6</b>
Tightening Torque Min	<b>1.2Nm / 1.2Nm Nm</b>
Tightening Torque Max	<b>2.0Nm / 1.8Nm Nm</b>

## DIMENSIONS

Width	<b>11 mm</b>
Length	<b>69,5 mm</b>
Height Mr 35X75	<b>653 mm</b>
Height MR 35x15	<b>72,80 mm</b>
Height Mr 32	<b>69,9 mm</b>