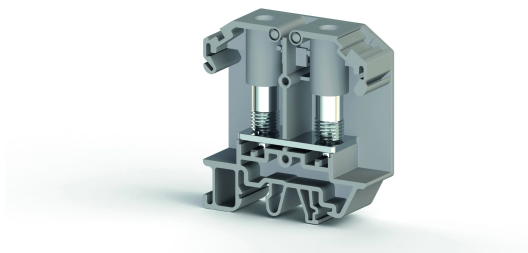


КЛЕММНЫЕ БЛОКИ > БОЛТОВЫЕ КЛЕММНЫЕ БЛОКИ > ПРОХОДНЫЕ КЛЕММЫ



## PB 25\_M6/NM Серый

Артикул (SKU): 308059

Разделительная пластина

### Коммерческая информация

|                                  |                     |
|----------------------------------|---------------------|
| Код продажи продукта             | <b>308059</b>       |
| Единица Упаковки                 | <b>10 шт.</b>       |
| Номер таможенного тарифа         | <b>853690950000</b> |
| Вес за единицу, включая упаковку | <b>0.056 kg.</b>    |

### Техническая информация

| PRODUCT FEATURES                      |                      |
|---------------------------------------|----------------------|
| Number of Connections                 | <b>2</b>             |
| Color                                 | <b>Grey</b>          |
| Number of Levels                      | <b>1</b>             |
| Insulation Material                   | <b>PA</b>            |
| UL 94 Flammability Class              | <b>V0</b>            |
| Impulse Voltage Category              | <b>III</b>           |
| Pollution Degree                      | <b>3</b>             |
| Connection According to Standard      | <b>IEC 60947-7-1</b> |
| Continuous Operating Temperature max. | <b>130 °C</b>        |
| Continuous Operating Temperature min. | <b>-60 °C</b>        |

| ELECTRICAL FEATURES     |              |
|-------------------------|--------------|
| Nominal Impulse Voltage | <b>8 Kv</b>  |
| Nominal Current         | <b>101 A</b> |
| Nominal Voltage         | <b>800 V</b> |

## CONNECTION DATA

|  |                           |
|--|---------------------------|
| Connection Type                          | <b>Bolt Connection</b>    |
| Single-core min. conductor cross-section | <b>1,5 mm<sup>2</sup></b> |
| Single-core max. conductor cross-section | <b>25 mm<sup>2</sup></b>  |
| Conductor Cross Section Awgkcmil Min     | <b>16 AWG</b>             |
| Conductor Cross Section Awgkcmil Max     | <b>4 AWG</b>              |
| Multi-core min. conductor cross-section  | <b>1,5 mm<sup>2</sup></b> |
| Multi-core max. conductor cross-section  | <b>25 mm<sup>2</sup></b>  |
| Tightening Torque Min                    | <b>3 Nm</b>               |
| Tightening Torque Max                    | <b>3,5 Nm</b>             |
| Hole Diameter Min                        | <b>6,2 mm</b>             |

## DIMENSIONS

|                 |                 |
|-----------------|-----------------|
| Width           | <b>18,00 mm</b> |
| Length          | <b>60,00 mm</b> |
| Height Mr 35X75 | <b>64,30 mm</b> |
| Height MR 35x15 | <b>71,80 mm</b> |
| Height Mr 32    | <b>68,90 mm</b> |