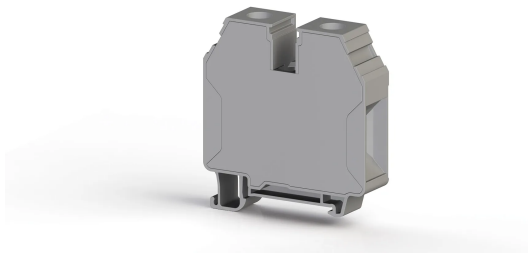


КЛЕММНЫЕ БЛОКИ > ВИНТОВЫЕ КЛЕММНЫЕ БЛОКИ > ПРОХОДНЫЕ КЛЕММЫ



AVK 35 RDS Серый

Артикул (SKU): 304580*Проходная клеммная колодка 35 мм², винтовая (серая)*

Коммерческая информация

| | |
|----------------------------------|---------------------|
| Код продажи продукта | 304580 |
| Единица Упаковки | 50 шт. |
| Номер таможенного тарифа | 853690950000 |
| Вес за единицу, включая упаковку | 0.0708 kg. |

Техническая информация

| PRODUCT FEATURES | |
|---------------------------------------|----------------------|
| Number of Connections | 2 |
| Color | Grey |
| Number of Levels | 1 |
| Insulation Material | PA |
| UL 94 Flammability Class | V2 |
| Impulse Voltage Category | III |
| Insulation Material Group | I |
| Pollution Degree | 3 |
| Connection According to Standard | IEC 60947-7-1 |
| Continuous Operating Temperature max. | 120 °C |
| Continuous Operating Temperature min. | -55 °C |

| ELECTRICAL FEATURES | |
|-------------------------|--------------|
| Nominal Impulse Voltage | 8 Kv |
| Nominal Current | 125 A |

| | |
|----------------------|---------------|
| Nominal Voltage | 1000 V |
| Maximum Load Current | 125 A |

CONNECTION DATA

| | |
|--|--------------------------|
| Connection Type | Screw Connection |
| Single-core min. conductor cross-section | 6 mm² |
| Single-core max. conductor cross-section | 50 mm² |
| Conductor Cross Section Awgkcmil Min | 10 AWG |
| Conductor Cross Section Awgkcmil Max | 2 AWG |
| Multi-core min. conductor cross-section | 6 mm² |
| Multi-core max. conductor cross-section | 35 mm² |
| Multi-core min. conductor cross-section with ferrule | 6 mm² |
| Multi-core max. conductor cross-section with ferrule | 35 mm² |
| 2 Conductors Of The Same Cross Section Multi Core Twin Ferrule With Plastic Sleeve Min | 4 mm² |
| 2 Conductors Of The Same Cross Section Multi Core Twin Ferrule With Plastic Sleeve Max | 16 mm² |
| Min. Stripping Length | 16 mm |
| Max. Stripping Length | 18 mm |
| Internal cylindrical indicator | B9 |
| Tightening Torque Min | 4 Nm |
| Tightening Torque Max | 6 Nm |

DIMENSIONS

| | |
|-----------------|-----------------|
| Width | 16 mm |
| Length | 62 mm |
| Height Mr 35X75 | 68 mm |
| Height MR 35x15 | 75,50 mm |