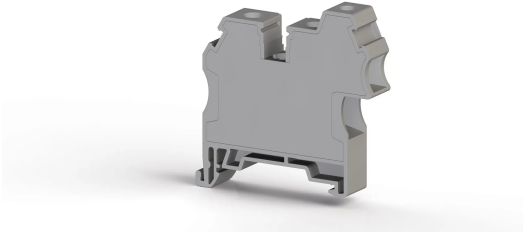


КЛЕММНЫЕ БЛОКИ > ВИНТОВЫЕ КЛЕММНЫЕ БЛОКИ > ПРОХОДНЫЕ КЛЕММЫ



AVK 10RD4 Серый

Артикул (SKU): 304289

Проходная клеммная колодка 10 мм², 1 вход (10 мм²) – 2 выхода (10 мм² – 4 мм²), винтовая (серая)

Коммерческая информация

Код продажи продукта	304289
Единица Упаковки	60 шт.
Номер таможенного тарифа	853690950000
Вес за единицу, включая упаковку	0.0122 kg.

Техническая информация

PRODUCT FEATURES	
Number of Connections	3
Color	Grey
Number of Levels	1
Insulation Material	PA
UL 94 Flammability Class	V2
Impulse Voltage Category	III
Insulation Material Group	I
Pollution Degree	3
Protective Conductor Type	PE
Connection According to Standard	IEC 60947-7-1
Continuous Operating Temperature max.	120 °C
Continuous Operating Temperature min.	-55 °C

ELECTRICAL FEATURES

Nominal Impulse Voltage	6 Kv
-------------------------	-------------

CONNECTION DATA

Connection Type	Screw Connection
Single-core min. conductor cross-section	0,5 - 0,2 mm²
Single-core max. conductor cross-section	16 - 4 mm²
Conductor Cross Section Awgkcmil Min	20 - 24 AWG
Conductor Cross Section Awgkcmil Max	6 - 12 AWG
Multi-core min. conductor cross-section	0,5 - 0,2 mm²
Multi-core max. conductor cross-section	16 - 4 mm²
Multi-core min. conductor cross-section with ferrule	0,5-0,2 mm²
Multi-core max. conductor cross-section with ferrule	10-4 mm²
2 Conductors Of The Same Cross Section Multi Core Twin Ferrule With Plastic Sleeve Min	0,5-0,5 mm²
2 Conductors Of The Same Cross Section Multi Core Twin Ferrule With Plastic Sleeve Max	6-1,5 mm²
Min. Stripping Length	10-7 mm
Max. Stripping Length	12-8 mm
Internal cylindrical indicator	B6-A4
Tightening Torque Min	1,2-0,5 Nm
Tightening Torque Max	1,8-0,8 Nm
Rail Tightening Torque Min	0,8 Nm
Rail Tightening Torque Max	1,0 Nm

DIMENSIONS

Width	10,00 mm
Length	51,40 mm
Height Mr 35X75	53,00 mm
Height MR 35x15	60,50 mm