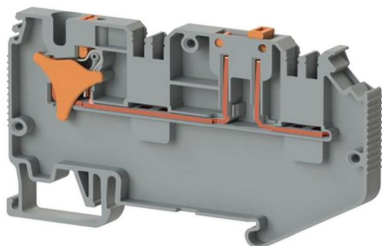


КЛЕММНЫЕ БЛОКИ

DS 4FA K4 (СЕРЫЙ)

Артикул (SKU): 329809

Клеммная колодка, 4 мм², однофазная + отдельная
однополюсная



Коммерческая информация

Код продажи продукта	329809
Единица Упаковки	50 шт.
Номер таможенного тарифа	853690950000

Техническая информация

PRODUCT FEATURES	
Number of Connections	2
Color	grey
Number of Levels	1
Insulation Material	PA
UL 94 Flammability Class	V0
Impulse Voltage Category	III
Insulation Material Group	I
Pollution Degree	3
Connection According to Standard	IEC 60947-7-1
Fire Protection In Railway Vehicles Din En 45545 2 R22 R23 R24 R26	HL 1 - HL 2 - HL 3
Continuous Operating Temperature max.	130 °C
Continuous Operating Temperature min.	-60 °C

ELECTRICAL FEATURES

Nominal Current	20 A (at 4 mm²) A
Nominal Voltage	500 V
Maximum Load Current	20 A (with 6 mm² conductor cross section) A

CONNECTION DATA

Connection Type	Push-in connection
Single-core min. conductor cross-section	0,08 mm²
Single-core max. conductor cross-section	6 mm²
Conductor Cross Section Awgkcmil Min	28 AWG
Conductor Cross Section Awgkcmil Max	10 AWG
Multi-core min. conductor cross-section	0,14 mm²
Multi-core max. conductor cross-section	4 mm²
Multi-core min. conductor cross-section with ferrule	0,14 mm²
Multi-core max. conductor cross-section with ferrule	4 mm²
2 Conductors Of The Same Cross Section Multi Core Twin Ferrule With Plastic Sleeve Min	1 mm²
Min. Stripping Length	8 mm
Max. Stripping Length	10 mm
Internal cylindrical indicator	A4

DIMENSIONS

Width	6,20 mm
Length	83,80 mm
Height Mr 35X75	57,20 mm
Height MR 35x15	49,70 mm