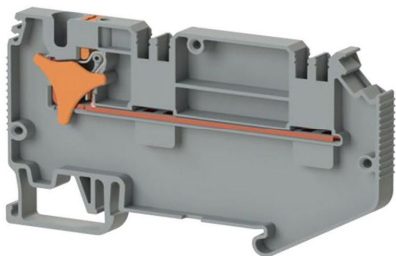


КЛЕММНЫЕ БЛОКИ

DS 4F K4 (СЕРЫЙ)

Артикул (SKU): 329819

Клеммная колодка, 4 мм², однофазная, однополюсная

Коммерческая информация

Код продажи продукта	329819
Единица Упаковки	50 шт.
Номер таможенного тарифа	853690950000

Техническая информация

PRODUCT FEATURES	
Number of Connections	1
Color	grey
Number of Levels	1
Insulation Material	PA
UL 94 Flammability Class	V0
Impulse Voltage Category	III
Insulation Material Group	I
Pollution Degree	3
Connection According to Standard	IEC 60947-7-1
Fire Protection In Railway Vehicles Din En 45545 2 R22 R23 R24 R26	HL 1 - HL 2 - HL 3
Continuous Operating Temperature max.	130 °C
Continuous Operating Temperature min.	-60 °C

ELECTRICAL FEATURES

Nominal Impulse Voltage	6 Kv
-------------------------	-------------

CONNECTION DATA

Connection Type	Push-in connection
-----------------	---------------------------

Single-core min. conductor cross-section	0,08 mm²
--	----------------------------

Single-core max. conductor cross-section	6 mm²
--	-------------------------

Conductor Cross Section Awgkcmil Min	28 AWG
--------------------------------------	---------------

Conductor Cross Section Awgkcmil Max	10 AWG
--------------------------------------	---------------

Multi-core min. conductor cross-section	0,14 mm²
---	----------------------------

Multi-core max. conductor cross-section	4 mm²
---	-------------------------

Multi-core min. conductor cross-section with ferrule	0,14 mm²
--	----------------------------

Multi-core max. conductor cross-section with ferrule	4 mm²
--	-------------------------

2 Conductors Of The Same Cross Section Multi Core Twin Ferrule With Plastic Sleeve Min	1 mm²
--	-------------------------

Min. Stripping Length	8 mm
-----------------------	-------------

Max. Stripping Length	10 mm
-----------------------	--------------

Internal cylindrical indicator	A4
--------------------------------	-----------

DIMENSIONS

Width	10 mm
-------	--------------

Length	119,84 mm
--------	------------------

Height Mr 35X75	49,70 mm
-----------------	-----------------

Height MR 35x15	57,20 mm
-----------------	-----------------