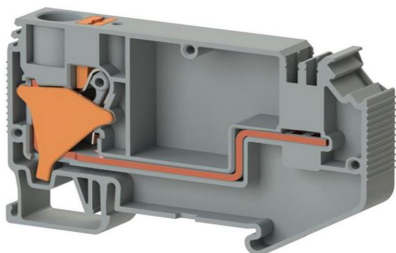


КЛЕММНЫЕ БЛОКИ

## DS 10F K4 (СЕРЫЙ)

Артикул (SKU): 328989

Главная клеммная колодка, 10 мм<sup>2</sup>, однофазная, однополюсная



### Коммерческая информация

Код продажи продукта	<b>328989</b>
Единица Упаковки	<b>50 шт.</b>
Номер таможенного тарифа	<b>853690950000</b>

### Техническая информация

PRODUCT FEATURES	
Number of Connections	<b>1</b>
Color	<b>grey</b>
Number of Levels	<b>1</b>
Insulation Material	<b>PA</b>
UL 94 Flammability Class	<b>V0</b>
Impulse Voltage Category	<b>III</b>
Insulation Material Group	<b>I</b>
Pollution Degree	<b>3</b>
Connection According to Standard	<b>IEC 60947-7-1</b>
Fire Protection In Railway Vehicles Din En 45545 2 R22 R23 R24 R26	<b>HL 1 - HL 2 - HL 3</b>
Continuous Operating Temperature max.	<b>130 °C</b>
Continuous Operating Temperature min.	<b>-60 °C</b>

## ELECTRICAL FEATURES

Nominal Impulse Voltage	<b>4 Kv</b>
Nominal Current	<b>57 A (at 10 mm<sup>2</sup>) A</b>
Nominal Voltage	<b>800 V</b>
Maximum Load Current	<b>65 A (with 16 mm<sup>2</sup> conductor cross section) A</b>

## CONNECTION DATA

Connection Type	<b>Push-in connection</b>
Single-core min. conductor cross-section	<b>0,2 mm<sup>2</sup></b>
Single-core max. conductor cross-section	<b>16 mm<sup>2</sup></b>
Conductor Cross Section Awgkcmil Min	<b>24 AWG</b>
Conductor Cross Section Awgkcmil Max	<b>6 AWG</b>
Multi-core min. conductor cross-section	<b>0,2 mm<sup>2</sup></b>
Multi-core max. conductor cross-section	<b>10 mm<sup>2</sup></b>
Multi-core min. conductor cross-section with ferrule	<b>0,25 mm<sup>2</sup></b>
Multi-core max. conductor cross-section with ferrule	<b>10 mm<sup>2</sup></b>
2 Conductors Of The Same Cross Section Multi Core Twin Ferrule With Plastic Sleeve Min	<b>2,5 mm<sup>2</sup></b>
Min. Stripping Length	<b>16 mm</b>
Max. Stripping Length	<b>18 mm</b>
Internal cylindrical indicator	<b>A6</b>

## DIMENSIONS

Width	<b>10 mm</b>
Length	<b>83,30 mm</b>
Height Mr 35X75	<b>49,70 mm</b>
Height MR 35x15	<b>57,20 mm</b>