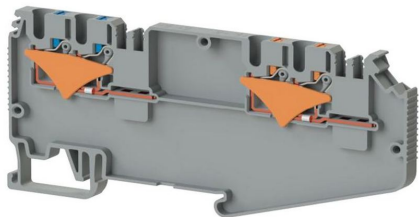


КЛЕММНЫЕ БЛОКИ

DS 2,5F2x2,5F2 K2,5 (СЕРЫЙ)

Артикул (SKU): 328929

Клеммная колодка, 2,5 мм², двухфазная, 2-полюсная**Коммерческая информация**

Код продажи продукта	328929
Единица Упаковки	50 шт.
Номер таможенного тарифа	853690950000

Техническая информация

PRODUCT FEATURES	
Number of Connections	4
Color	grey
Number of Levels	1
Insulation Material	PA
UL 94 Flammability Class	V0
Impulse Voltage Category	III
Insulation Material Group	I
Pollution Degree	3
Connection According to Standard	IEC 60947-7-1
Continuous Operating Temperature max.	130 °C
Continuous Operating Temperature min.	-60 °C

ELECTRICAL FEATURES

Nominal Impulse Voltage	8 Kv
Nominal Current	24 A (at 2.5 mm²) A
Nominal Voltage	500 V
Maximum Load Current	32 A (with 4 mm² conductor cross section) A

CONNECTION DATA

Connection Type	Push-in connection
Single-core min. conductor cross-section	0,08 mm²
Single-core max. conductor cross-section	4 mm²
Conductor Cross Section Awgkcmil Min	28 AWG
Conductor Cross Section Awgkcmil Max	12 AWG
Multi-core min. conductor cross-section	0,14 mm²
Multi-core max. conductor cross-section	2,5 mm²
Multi-core min. conductor cross-section with ferrule	0,14 mm²
Multi-core max. conductor cross-section with ferrule	2,5 mm²
2 Conductors Of The Same Cross Section Multi Core Twin Ferrule With Plastic Sleeve Min	0,5 mm²
Min. Stripping Length	8 mm
Max. Stripping Length	10 mm
Internal cylindrical indicator	A3

DIMENSIONS

Width	5,20 mm
Length	10,6,17 mm
Height Mr 35X75	49,70 mm
Height MR 35x15	57,20 mm