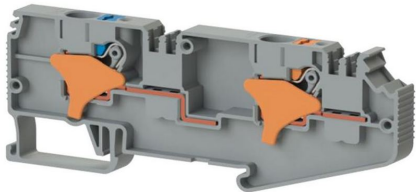


КЛЕММНЫЕ БЛОКИ

DS 6Fx6F K1

Артикул (SKU): 328859

Главная клеммная колодка, 6 мм², однофазная, двухполюсная

Коммерческая информация

Код продажи продукта	328859
Единица Упаковки	16 шт.
Номер таможенного тарифа	853690950000

Техническая информация

PRODUCT FEATURES	
Number of Connections	2
Color	Grey
Number of Levels	1
Insulation Material	PA
UL 94 Flammability Class	V0
Impulse Voltage Category	III
Insulation Material Group	I
Pollution Degree	3
Connection According to Standard	IEC 60947-7-1
Fire Protection In Railway Vehicles Din En 45545 2 R22 R23 R24 R26	HL 1 - HL 2 - HL 3
Continuous Operating Temperature max.	130 °C
Continuous Operating Temperature min.	-60 °C

ELECTRICAL FEATURES

Nominal Impulse Voltage	4 Kv
Nominal Current	41 A (at 6 mm²) A
Nominal Voltage	250 V
Maximum Load Current	57 A (with 10 mm² conductor cross section) A

CONNECTION DATA

Connection Type	Push-in connection
Single-core min. conductor cross-section	0,2 mm²
Single-core max. conductor cross-section	10 mm²
Conductor Cross Section Awgkcmil Min	24 AWG
Conductor Cross Section Awgkcmil Max	8 AWG
Multi-core min. conductor cross-section	0,2 mm²
Multi-core max. conductor cross-section	6 mm²
Multi-core min. conductor cross-section with ferrule	0,25 mm²
Multi-core max. conductor cross-section with ferrule	6 mm²
Min. Stripping Length	10 mm
Max. Stripping Length	12 mm
Internal cylindrical indicator	A5

DIMENSIONS

Width	8,0 mm
Length	103,27 mm
Height Mr 35X75	41,95 mm
Height MR 35x15	49,45 mm