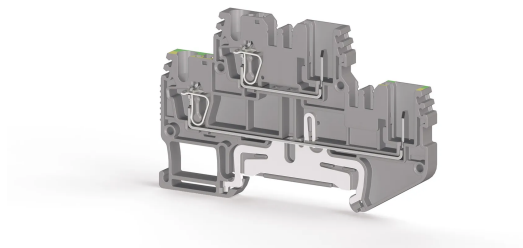


КЛЕММНЫЕ БЛОКИ > ПРУЖИННЫЕ КЛЕММНЫЕ БЛОКИ > ПРОХОДНЫЕ КЛЕММЫ



СТР 2,5-FT Серый

Артикул (SKU): 310189

Клемма Clamp+Pin 2,5 мм² 2-слойная проходная (фаза+земля)

Коммерческая информация

Код продажи продукта	310189
Единица Упаковки	50 шт.
Номер таможенного тарифа	853690950000
Вес за единицу, включая упаковку	0.016 kg.

Техническая информация

PRODUCT FEATURES	
Number of Connections	4
Number of Levels	2
Protective Conductor Type	PE
Insulation Material	PA
UL 94 Flammability Class	VO
Impulse Voltage Category	III
Insulation Material Group	I
Pollution Degree	3
Connection According to Standard	IEC 61984 / IEC 60947-7-2
Fire Protection In Railway Vehicles Din En 45545 2 R22 R23 R24 R26	HL 1 - HL 2 - HL 3
Continuous Operating Temperature max.	130 °C
Continuous Operating Temperature min.	-60 °C

ELECTRICAL FEATURES

Nominal Impulse Voltage	6 Kv
Nominal Current	24 A
Nominal Voltage	500 V
Maximum Load Current	24 A

CONNECTION DATA

Connection Type	Spring - Plug Connection
Single-core min. conductor cross-section	0,08 mm²
Single-core max. conductor cross-section	4 mm²
Conductor Cross Section Awgkcmil Min	28 kcmil
Conductor Cross Section Awgkcmil Max	12 AWG
Multi-core min. conductor cross-section	0,14 mm²
Multi-core max. conductor cross-section	2,5 mm²
Multi-core min. conductor cross-section with ferrule	0,14 mm²
Multi-core max. conductor cross-section with ferrule	2,5 mm²
2 Conductors Of The Same Cross Section Multi Core Twin Ferrule With Plastic Sleeve Max	0,5 mm²
Min. Stripping Length	8 mm
Max. Stripping Length	10 mm
Internal cylindrical indicator	A3

DIMENSIONS

Width	5,2 mm
Length	79,20 mm
Height Mr 35X75	50,30 mm
Height MR 35x15	57,80 mm