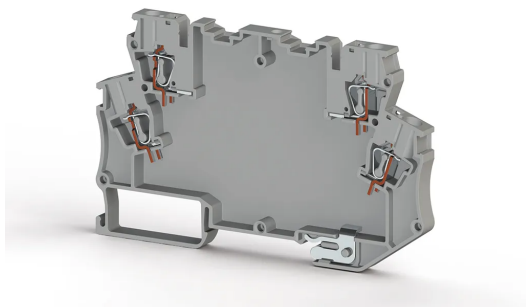


ЭЛЕКТРОННАЯ ПРОДУКЦИЯ > ЭЛЕКТРОННЫЕ МОДУЛИ > ЭЛЕКТРОННЫЕ
КЛЕММНЫЕ БЛОКИ



MDB 4LE Серый

Артикул (SKU): 327039

Клемма типа Cage Clamp 4-полюсная, один LED, двойная
полосовая этикетка с заземлением (пластиковый корпус)

Коммерческая информация

| | |
|----------------------------------|---------------------|
| Код продажи продукта | 327039 |
| Единица Упаковки | 20 шт. |
| Номер таможенного тарифа | 853630300000 |
| Вес за единицу, включая упаковку | 0.017 kg. |

Техническая информация

| PRODUCT FEATURES | |
|---------------------------------------|----------------------|
| Number of Connections | 4 |
| Color | Grey |
| Number of Levels | 2 |
| Insulation Material | PA |
| UL 94 Flammability Class | V2 |
| Impulse Voltage Category | III |
| Insulation Material Group | I |
| Pollution Degree | 3 |
| Protective Conductor Type | PE |
| Connection According to Standard | IEC 60947-7-1 |
| Continuous Operating Temperature max. | 120 °C |
| Continuous Operating Temperature min. | -55 °C |

ELECTRICAL FEATURES

| | |
|-------------------------|--------------|
| Nominal Impulse Voltage | 8 Kv |
| Nominal Current | 32 A |
| Nominal Voltage | 800 V |

CONNECTION DATA

| | |
|--|----------------------------|
| Connection Type | Spring Connection |
| Single-core min. conductor cross-section | 0,08 mm² |
| Single-core max. conductor cross-section | 4 mm² |
| Conductor Cross Section Awgkcmil Min | 28 AWG |
| Conductor Cross Section Awgkcmil Max | 12 AWG |
| Multi-core min. conductor cross-section | 0,08 mm² |
| Multi-core max. conductor cross-section | 2,5 mm² |
| Multi-core min. conductor cross-section with ferrule | 0,14 mm² |
| Multi-core max. conductor cross-section with ferrule | 2,5 mm² |
| Min. Stripping Length | 8 mm |
| Max. Stripping Length | 10 mm |
| Internal cylindrical indicator | A3 |
| 2 Conductors Of The Same Cross Section Multi Core Twin Ferrule With Plastic Sleeve | 0,5 mm² |

DIMENSIONS

| | |
|-----------------|-----------------|
| Width | 6,2 mm |
| Length | 100,5 mm |
| Height Mr 35X75 | 63,5 mm |
| Height MR 35x15 | 71 mm |