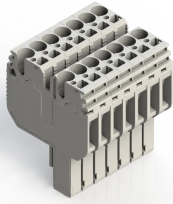


КЛЕММНЫЕ БЛОКИ &gt; ПРУЖИННЫЕ КЛЕММНЫЕ БЛОКИ &gt; ПРОХОДНЫЕ КЛЕММЫ



## SG-PT 2,5DB/7 Серый

Артикул (SKU): 310629

Розеточная клемма, 2,5 мм<sup>2</sup> (под StoP Series)

### Коммерческая информация

Код продажи продукта	<b>310629</b>
Единица Упаковки	<b>25 шт.</b>
Номер таможенного тарифа	<b>853690950000</b>
Вес за единицу, включая упаковку	<b>0.0384 kg.</b>

### Техническая информация

PRODUCT FEATURES	
Number of Connections	<b>7</b>
Color	<b>Grey</b>
Number of Levels	<b>2</b>
Insulation Material	<b>PA</b>
UL 94 Flammability Class	<b>VO</b>
Impulse Voltage Category	<b>III</b>
Insulation Material Group	<b>I</b>
Pollution Degree	<b>3</b>
Protective Conductor Type	
Connection According to Standard	<b>IEC 61984/IEC 60947-7-1</b>
Fire Protection In Railway Vehicles Din En 45545 2 R22 R23 R24 R26	<b>HL 1 - HL 2 - HL 3</b>
Continuous Operating Temperature max.	<b>130 °C</b>
Continuous Operating Temperature min.	<b>-60 °C</b>

### ELECTRICAL FEATURES

Nominal Impulse Voltage	<b>6 Kv</b>
Nominal Current	<b>24 A</b>
Nominal Voltage	<b>500 V</b>
Maximum Load Current	<b>24 A</b>

## CONNECTION DATA

Connection Type	<b>Spring Connection</b>
Single-core min. conductor cross-section	<b>0,08 mm<sup>2</sup></b>
Single-core max. conductor cross-section	<b>4 mm<sup>2</sup></b>
Conductor Cross Section Awgkcmil Min	<b>28 AWG</b>
Conductor Cross Section Awgkcmil Max	<b>12 AWG</b>
Multi-core min. conductor cross-section	<b>0,14 mm<sup>2</sup></b>
Multi-core max. conductor cross-section	<b>2,5 mm<sup>2</sup></b>
Multi-core min. conductor cross-section with ferrule	<b>0,14 mm<sup>2</sup></b>
Multi-core max. conductor cross-section with ferrule	<b>2,5 mm<sup>2</sup></b>
2 Conductors Of The Same Cross Section Multi Core Twin Ferrule With Plastic Sleeve Min	<b>0,5 mm<sup>2</sup></b>
Min. Stripping Length	<b>8 mm</b>
Max. Stripping Length	<b>10 mm</b>
Internal cylindrical indicator	<b>A3</b>

## DIMENSIONS

Width	<b>36,4 mm</b>
Length	<b>34,60 mm</b>
Height	<b>41,90 mm</b>