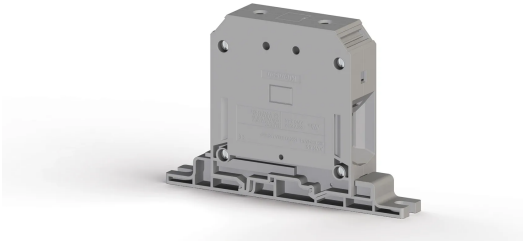


КЛЕММНЫЕ БЛОКИ > ВИНТОВЫЕ КЛЕММНЫЕ БЛОКИ > ПРОХОДНЫЕ КЛЕММЫ



AVK PB95 Серый

Артикул (SKU): 304460*Высокотоковая проходная клемма 95 мм², винтовая*

Коммерческая информация

Код продажи продукта	304460
Единица Упаковки	6 шт.
Номер таможенного тарифа	853690950000
Вес за единицу, включая упаковку	0.19583333 kg.

Техническая информация

PRODUCT FEATURES	
Number of Connections	2
Color	Grey
Number of Levels	1
Insulation Material	PA
UL 94 Flammability Class	V2
Impulse Voltage Category	III
Insulation Material Group	I
Pollution Degree	3
Connection According to Standard	IEC 60947-7-1
Continuous Operating Temperature max.	120 °C
Continuous Operating Temperature min.	-55 °C

ELECTRICAL FEATURES	
Nominal Impulse Voltage	8 Kv
Nominal Current	232 A

Nominal Voltage	1000 V
Maximum Load Current	232 A

CONNECTION DATA

Connection Type	Screw Connection
Single-core min. conductor cross-section	25 mm²
Single-core max. conductor cross-section	95 mm²
Conductor Cross Section Awgkcmil Min	4 AWG
Conductor Cross Section Awgkcmil Max	3/0 AWG
Multi-core min. conductor cross-section	35 mm²
Multi-core max. conductor cross-section	95 mm²
Multi-core min. conductor cross-section with ferrule	35 mm²
Multi-core max. conductor cross-section with ferrule	95 mm²
2 Conductors Of The Same Cross Section Multi Core Twin Ferrule With Plastic Sleeve Min	16 mm²
2 Conductors Of The Same Cross Section Multi Core Twin Ferrule With Plastic Sleeve Max	35 mm²
Min. Stripping Length	26 mm
Max. Stripping Length	28 mm
Internal cylindrical indicator	B12
Tightening Torque Min	10 Nm
Tightening Torque Max	15 Nm

DIMENSIONS

Width	25 mm
Length	135,4 mm
Height	91,5 mm