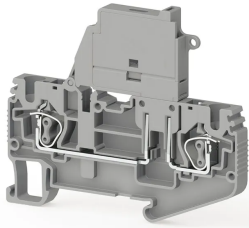


TERMINAL BLOCKS > SPRING CLAMP TYPE TERMINAL BLOCKS > FUSE TERMINALS



SRD 4SLD 48V AC/DC Grey

Stock Keeping Unit (SKU): 312149

Cage Clamp Type, with orange button, 4 mm² fuse terminal block (48V)

Commercial Information

Product Sales Code	312149
Package Unit	30 pcs.
Customs Tariff Number	853690950000
Weight Per Unit Including Packaging	0.018 kg.

Technical Information

PRODUCT FEATURES	
Number of Connections	2
Color	Grey
Number of Levels	1
Insulation Material	PA
UL 94 Flammability Class	V0
Impulse Voltage Category	III
Insulation Material Group	I
Pollution Degree	3
Connection According to Standard	IEC 60947-7-3
Fire Protection In Railway Vehicles Din En 45545 2 R22 R23 R24 R26	HL 1-HL 2-HL 3
Continuous Operating Temperature max.	130 °C
Continuous Operating Temperature min.	-60 °C
Fuse	G/5x20

Fuse Type	Glass
-----------	--------------

ELECTRICAL FEATURES

Nominal Impulse Voltage	6 Kv
Nominal Current	10 A
Nominal Voltage	48 V
Maximum Load Current	10 A

CONNECTION DATA

Connection Type	Spring Connection
Single-core min. conductor cross-section	0,08 mm²
Single-core max. conductor cross-section	6 mm²
Conductor Cross Section Awgkcmil Min	28 AWG
Conductor Cross Section Awgkcmil Max	10 AWG
Multi-core min. conductor cross-section	0,14 mm²
Multi-core max. conductor cross-section	4 mm²
Multi-core min. conductor cross-section with ferrule	0,14 mm²
Multi-core max. conductor cross-section with ferrule	4 mm²
Min. Stripping Length	8 mm
Max. Stripping Length	10 mm
Internal cylindrical indicator	A4
2 Conductors Of The Same Cross Section Multi Core Twin Ferrule With Plastic Sleeve	1 mm²

DIMENSIONS

Width	6,2 mm
Length	76,6 mm
Height Mr 35X75	64,8 mm
Height MR 35x15	72,3 mm