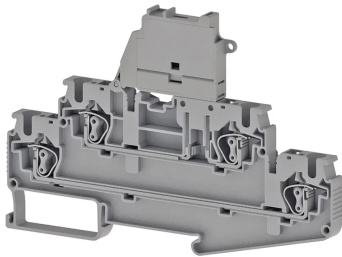


TERMINAL BLOCKS > SPRING CLAMP TYPE TERMINAL BLOCKS > FUSE TERMINALS



## SRD 4FSLD 24V AC/DC Grey

**Stock Keeping Unit (SKU):** 312269

*4 mm<sup>2</sup> Cage Clamp 2-Layer Fuse Terminal Block (LED 24VAC/DC)  
(5x20)*

### Commercial Information

Product Sales Code	<b>312269</b>
Package Unit	<b>28 pcs.</b>
Customs Tariff Number	<b>853630100000</b>
Weight Per Unit Including Packaging	<b>0.03 kg.</b>

### Technical Information

PRODUCT FEATURES	
Number of Connections	<b>4</b>
Color	<b>Grey</b>
Number of Levels	<b>2</b>
Insulation Material	<b>PA</b>
UL 94 Flammability Class	<b>V0</b>
Impulse Voltage Category	<b>III</b>
Insulation Material Group	<b>I</b>
Pollution Degree	<b>3</b>
Connection According to Standard	<b>IEC 60947-7-1 / IEC 60947-7-3</b>
Fire Protection In Railway Vehicles Din En 45545 2 R22 R23 R24 R26	<b>HL 1-HL 2-HL 3</b>
Continuous Operating Temperature max.	<b>130 °C</b>
Continuous Operating Temperature min.	<b>-60 °C</b>
Fuse	<b>G/5x20</b>

Fuse Type	<b>Glass</b>
-----------	--------------

## ELECTRICAL FEATURES

Nominal Impulse Voltage	<b>6 Kv</b>
Nominal Current	<b>32 A</b>
Nominal Voltage	<b>500 V</b>
Maximum Load Current	<b>41 A</b>
Nominal Current In Fuse	<b>10 A</b>
Maximum Load Current Fuse	<b>10 A</b>
Nominal Voltage Fuse	<b>24 V</b>

## CONNECTION DATA

Connection Type	<b>Spring Connection</b>
Single-core min. conductor cross-section	<b>0,08 mm<sup>2</sup></b>
Single-core max. conductor cross-section	<b>6 mm<sup>2</sup></b>
Conductor Cross Section Awgkcmil Min	<b>28 AWG</b>
Conductor Cross Section Awgkcmil Max	<b>10 AWG</b>
Multi-core min. conductor cross-section	<b>0,14 mm<sup>2</sup></b>
Multi-core max. conductor cross-section	<b>4 mm<sup>2</sup></b>
Multi-core min. conductor cross-section with ferrule	<b>0,14 mm<sup>2</sup></b>
Multi-core max. conductor cross-section with ferrule	<b>4 mm<sup>2</sup></b>
Min. Stripping Length	<b>8 mm</b>
Max. Stripping Length	<b>10 mm</b>
Internal cylindrical indicator	<b>A4</b>
2 Conductors Of The Same Cross Section Multi Core Twin Ferrule With Plastic Sleeve	<b>1 mm<sup>2</sup></b>

## DIMENSIONS

Width	<b>6,2 mm</b>
Length	<b>116,6 mm</b>
Height Mr 35X75	<b>77,8 mm</b>
Height MR 35x15	<b>85,3 mm</b>