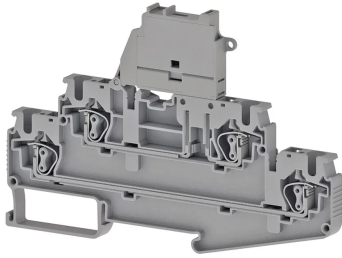


TERMINAL BLOCKS > SPRING CLAMP TYPE TERMINAL BLOCKS > FUSE TERMINALS



SRD 4FSLD 220V AC/DC Grey

Stock Keeping Unit (SKU): 312299

*4 mm² Cage Clamp 2-Layer Fuse Terminal Block (LED 24VAC/DC)
(5x20)*

Commercial Information

Product Sales Code	312299
Package Unit	28 pcs.
Customs Tariff Number	853630100000
Weight Per Unit Including Packaging	0.03 kg.

Technical Information

PRODUCT FEATURES	
Number of Connections	4
Color	Grey
Number of Levels	2
Insulation Material	PA
UL 94 Flammability Class	V0
Impulse Voltage Category	III
Insulation Material Group	I
Pollution Degree	3
Connection According to Standard	IEC 60947-7-1 / IEC 60947-7-3
Fire Protection In Railway Vehicles Din En 45545 2 R22 R23 R24 R26	HL 1-HL 2-HL 3
Continuous Operating Temperature max.	130 °C
Continuous Operating Temperature min.	-60 °C
Fuse	G/5x20

Fuse Type	Glass
-----------	--------------

ELECTRICAL FEATURES

Nominal Impulse Voltage	6 Kv
Nominal Current	32 A
Nominal Voltage	500 V
Maximum Load Current	41 A
Nominal Current In Fuse	10 A
Maximum Load Current Fuse	10 A
Nominal Voltage Fuse	220 V

CONNECTION DATA

Connection Type	Spring Connection
Single-core min. conductor cross-section	0,08 mm²
Single-core max. conductor cross-section	6 mm²
Conductor Cross Section Awgkcmil Min	28 AWG
Conductor Cross Section Awgkcmil Max	10 AWG
Multi-core min. conductor cross-section	0,14 mm²
Multi-core max. conductor cross-section	4 mm²
Multi-core min. conductor cross-section with ferrule	0,14 mm²
Multi-core max. conductor cross-section with ferrule	4 mm²
Min. Stripping Length	8 mm
Max. Stripping Length	10 mm
Internal cylindrical indicator	A4
2 Conductors Of The Same Cross Section Multi Core Twin Ferrule With Plastic Sleeve	1 mm²

DIMENSIONS

Width	6,2 mm
Length	116,6 mm
Height Mr 35X75	77,8 mm
Height MR 35x15	85,3 mm