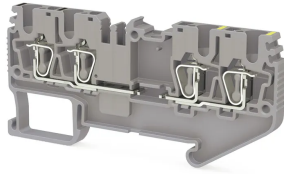


TERMINAL BLOCKS > SPRING CLAMP TYPE TERMINAL BLOCKS > MULTI-CONDUCTOR TERMINAL BLOCKS



SRD 2,5CX2 Gri

Stock Keeping Unit (SKU): 311149

Cage Clamp Type, 2,5 mm² 2 input-2 output terminal block

Commercial Information

Product Sales Code	311149
Package Unit	50 pcs.
Customs Tariff Number	853690950000
Weight Per Unit Including Packaging	0.010484 kg.

Technical Information

PRODUCT FEATURES	
Number of Connections	2
Color	Grey
Number of Levels	2
Insulation Material	PA
UL 94 Flammability Class	V0
Impulse Voltage Category	III
Insulation Material Group	I
Pollution Degree	3
Connection According to Standard	IEC 60947-7-1
Fire Protection In Railway Vehicles Din En 45545 2 R22 R23 R24 R26	HL 1 - HL 2 - HL 3
Continuous Operating Temperature max.	130 °C
Continuous Operating Temperature min.	-60 °C

ELECTRICAL FEATURES

Nominal Impulse Voltage	8 Kv
Nominal Voltage	800 V
Maximum Load Current	32 A
Nominal Current In Fuse	24 A

CONNECTION DATA

Connection Type	Spring Connection
Single-core min. conductor cross-section	0,08 mm²
Single-core max. conductor cross-section	4 mm²
Conductor Cross Section Awgkcmil Min	28 AWG
Conductor Cross Section Awgkcmil Max	12 AWG
Multi-core min. conductor cross-section	0,14 mm²
Multi-core max. conductor cross-section	2,5 mm²
Multi-core min. conductor cross-section with ferrule	0,14 mm²
Multi-core max. conductor cross-section with ferrule	2,5 mm²
2 Conductors Of The Same Cross Section Multi Core Twin Ferrule With Plastic Sleeve Min	0,5 mm²
Min. Stripping Length	8 mm
Max. Stripping Length	10 mm
Internal cylindrical indicator	A3

DIMENSIONS

Width	5,2 mm
Length	78,10 mm
Height Mr 35X75	37,30 mm
Height MR 35x15	44,80 mm