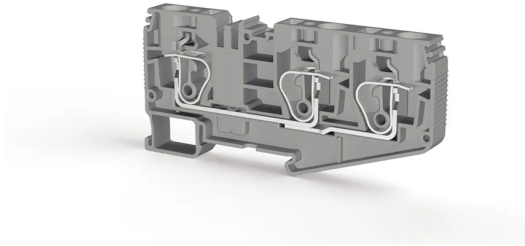


TERMINAL BLOCKS > SPRING CLAMP TYPE TERMINAL BLOCKS > MULTI-CONDUCTOR TERMINAL BLOCKS



SRD 10E Grey

Stock Keeping Unit (SKU): 312229

Cage Clamp Type, 10 mm² 1 input-2 output feed through terminal block

Commercial Information

Product Sales Code	312229
Package Unit	50 pcs.
Customs Tariff Number	853690950000
Weight Per Unit Including Packaging	0.0404 kg.

Technical Information

PRODUCT FEATURES	
Number of Connections	3
Color	Grey
Number of Levels	1
Insulation Material	PA
UL 94 Flammability Class	V0
Impulse Voltage Category	III
Insulation Material Group	I
Pollution Degree	3
Connection According to Standard	IEC 60947-7-1
Fire Protection In Railway Vehicles Din En 45545 2 R22 R23 R24 R26	HL 1 - HL 2 - HL 3
Continuous Operating Temperature max.	130 °C
Continuous Operating Temperature min.	-60 °C

ELECTRICAL FEATURES

Nominal Impulse Voltage	8 Kv
Nominal Current	57 A
Nominal Voltage	1000 V
Maximum Load Current	63 A

CONNECTION DATA

Connection Type	Spring Connection
Single-core min. conductor cross-section	0,2 mm²
Single-core max. conductor cross-section	16 mm²
Conductor Cross Section Awgkcmil Min	24 AWG
Conductor Cross Section Awgkcmil Max	6 AWG
Multi-core min. conductor cross-section	0,2 mm²
Multi-core max. conductor cross-section	10 mm²
Multi-core min. conductor cross-section with ferrule	0,25 mm²
Multi-core max. conductor cross-section with ferrule	10 mm²
2 Conductors Of The Same Cross Section Multi Core Twin Ferrule With Plastic Sleeve Max	2,5 mm²
Min. Stripping Length	16 mm
Max. Stripping Length	18 mm
Internal cylindrical indicator	A6

DIMENSIONS

Width	10,00 mm
Length	103,3 mm
Height Mr 35X75	49,60 mm
Height MR 35x15	57,10 mm