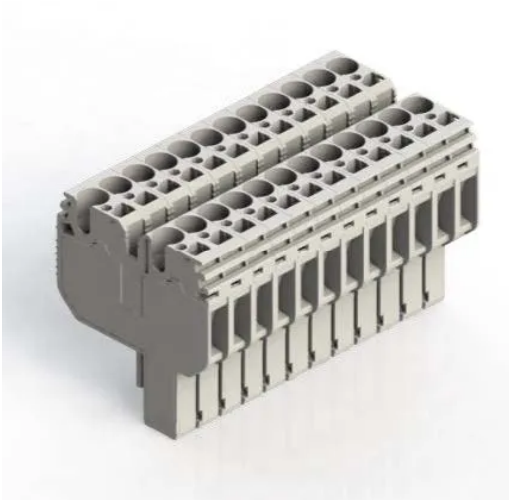


TERMINAL BLOCKS > SPRING CLAMP TYPE TERMINAL BLOCKS > FEED THROUGH TERMINALS



## SG-PT 2,5DB/12 Grey

**Stock Keeping Unit (SKU):** 310679

*Socket Type, 2,5 mm<sup>2</sup> terminal block (suitable for StoP Series)*

### Commercial Information

Product Sales Code	<b>310679</b>
Package Unit	<b>10 pcs.</b>
Customs Tariff Number	<b>853690950000</b>
Weight Per Unit Including Packaging	<b>0.068 kg.</b>

### Technical Information

PRODUCT FEATURES	
Number of Connections	<b>12</b>
Color	<b>Grey</b>
Number of Levels	<b>2</b>
Insulation Material	<b>PA</b>
UL 94 Flammability Class	<b>V0</b>
Impulse Voltage Category	<b>III</b>
Insulation Material Group	<b>I</b>
Pollution Degree	<b>3</b>
Connection According to Standard	<b>IEC 61984/IEC 60947-7-1</b>
Fire Protection In Railway Vehicles Din En 45545 2 R22 R23 R24 R26	<b>HL 1 - HL 2 - HL 3</b>
Continuous Operating Temperature max.	<b>130 °C</b>

Continuous Operating Temperature min.	<b>-60 °C</b>
---------------------------------------	---------------

## ELECTRICAL FEATURES

Nominal Impulse Voltage	<b>6 Kv</b>
-------------------------	-------------

Nominal Current	<b>24 A</b>
-----------------	-------------

Nominal Voltage	<b>500 V</b>
-----------------	--------------

Maximum Load Current	<b>24 A</b>
----------------------	-------------

## CONNECTION DATA

Connection Type	<b>Spring Connection</b>
-----------------	--------------------------

Single-core min. conductor cross-section	<b>0,08 mm<sup>2</sup></b>
--	----------------------------

Single-core max. conductor cross-section	<b>4 mm<sup>2</sup></b>
--	-------------------------

Conductor Cross Section Awgkcmil Min	<b>28 AWG</b>
--------------------------------------	---------------

Conductor Cross Section Awgkcmil Max	<b>12 AWG</b>
--------------------------------------	---------------

Multi-core min. conductor cross-section	<b>0,14 mm<sup>2</sup></b>
---	----------------------------

Multi-core max. conductor cross-section	<b>2,5 mm<sup>2</sup></b>
---	---------------------------

Multi-core min. conductor cross-section with ferrule	<b>0,14 mm<sup>2</sup></b>
--	----------------------------

Multi-core max. conductor cross-section with ferrule	<b>2,5 mm<sup>2</sup></b>
--	---------------------------

2 Conductors Of The Same Cross Section Multi Core Twin Ferrule With Plastic Sleeve Min	<b>0,5 mm<sup>2</sup></b>
--	---------------------------

Min. Stripping Length	<b>8 mm</b>
-----------------------	-------------

Max. Stripping Length	<b>10 mm</b>
-----------------------	--------------

Internal cylindrical indicator	<b>A3</b>
--------------------------------	-----------

## DIMENSIONS

Width	<b>62,4 mm</b>
-------	----------------

Length	<b>34,60 mm</b>
--------	-----------------

Height	<b>41,90 mm</b>
--------	-----------------