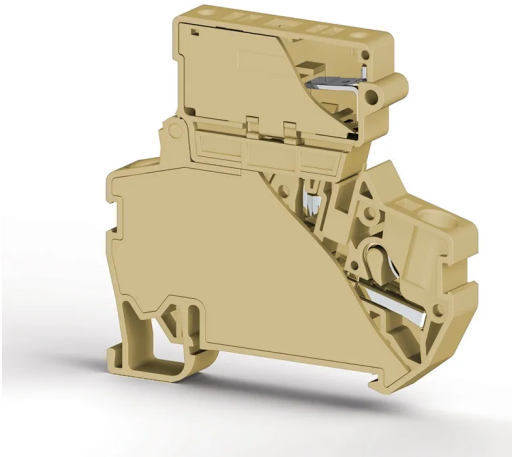


TERMINAL BLOCKS > PUSH-IN TYPE TERMINAL BLOCKS > FUSE TERMINALS



## PYK 4S\_5x25 Beige

**Stock Keeping Unit (SKU):** 307280

*4 mm<sup>2</sup> Push-In Fuse Terminal Block (5x20)*

### Commercial Information

|                                     |                       |
|-------------------------------------|-----------------------|
| Product Sales Code                  | <b>307280</b>         |
| Package Unit                        | <b>15 pcs.</b>        |
| Customs Tariff Number               | <b>853690950000</b>   |
| Weight Per Unit Including Packaging | <b>0.02213333 kg.</b> |

### Technical Information

| PRODUCT FEATURES                      |                      |
|---------------------------------------|----------------------|
| Number of Connections                 | <b>2</b>             |
| Color                                 | <b>Beige</b>         |
| Number of Levels                      | <b>1</b>             |
| Insulation Material                   | <b>PA</b>            |
| UL 94 Flammability Class              | <b>V2</b>            |
| Impulse Voltage Category              | <b>III</b>           |
| Insulation Material Group             | <b>I</b>             |
| Pollution Degree                      | <b>3</b>             |
| Connection According to Standard      | <b>IEC 60947-7-3</b> |
| Continuous Operating Temperature max. | <b>120 °C</b>        |
| Continuous Operating Temperature min. | <b>-55 °C</b>        |

|           |               |
|-----------|---------------|
| Fuse      | <b>G/5X25</b> |
| Fuse Type | <b>Glass</b>  |

## ELECTRICAL FEATURES

|                         |              |
|-------------------------|--------------|
| Nominal Impulse Voltage | <b>6 Kv</b>  |
| Nominal Voltage         | <b>500 V</b> |
| Nominal Current In Fuse | <b>10 A</b>  |

## CONNECTION DATA

|  |                            |
|--|----------------------------|
| Connection Type  | <b>Push-In Connection</b>  |
| Single-core min. conductor cross-section   | <b>0,34 mm<sup>2</sup></b> |
| Single-core max. conductor cross-section   | <b>6 mm<sup>2</sup></b>    |
| Conductor Cross Section Awgkcmil Min   | <b>22 AWG</b>              |
| Conductor Cross Section Awgkcmil Max   | <b>10 AWG</b>              |
| Multi-core min. conductor cross-section  | <b>0,25 mm<sup>2</sup></b> |
| Multi-core max. conductor cross-section  | <b>4 mm<sup>2</sup></b>    |
| Multi-core min. conductor cross-section with ferrule                               | <b>0,34 mm<sup>2</sup></b> |
| Multi-core max. conductor cross-section with ferrule                               | <b>4 mm<sup>2</sup></b>    |
| Min. Stripping Length  | <b>9 mm</b>                |
| Max. Stripping Length  | <b>10 mm</b>               |
| Internal cylindrical indicator   | <b>A4</b>                  |
| 2 Conductors Of The Same Cross Section Multi Core Twin Ferrule With Plastic Sleeve | <b>1 mm<sup>2</sup></b>    |

## DIMENSIONS

|                 |                 |
|-----------------|-----------------|
| Width           | <b>8 mm</b>     |
| Length          | <b>63,10 mm</b> |
| Height Mr 35X75 | <b>61,10 mm</b> |
| Height MR 35x15 | <b>68,60 mm</b> |