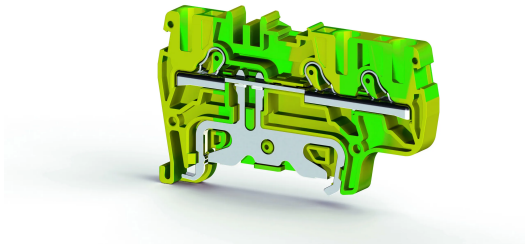


TERMINAL BLOCKS > PUSH-IN TYPE TERMINAL BLOCKS > GROUNDING TERMINALS



PYK 2,5 ET

Stock Keeping Unit (SKU): 336600

Push-in Type, 4 mm² 1 input-2 output grounding terminal block

Commercial Information

Product Sales Code	336600
Package Unit	50 pcs.
Customs Tariff Number	853690950000
Weight Per Unit Including Packaging	0.0168 kg.

Technical Information

PRODUCT FEATURES	
Number of Connections	3
Number of Levels	1
Insulation Material	PA
UL 94 Flammability Class	V2
Impulse Voltage Category	III
Insulation Material Group	I
Pollution Degree	3
Protective Conductor Type	PE
Connection According to Standard	IEC 60947-7-2
Continuous Operating Temperature max.	120 °C
Continuous Operating Temperature min.	-55 °C

ELECTRICAL FEATURES	
Nominal Impulse Voltage	8 Kv

CONNECTION DATA	
-----------------	--

Connection Type	Push-In Connection
Single-core min. conductor cross-section	0,34 mm²
Single-core max. conductor cross-section	6 mm²
Conductor Cross Section Awgkcmil Min	22 AWG
Conductor Cross Section Awgkcmil Max	10 AWG
Multi-core min. conductor cross-section	0,25 mm²
Multi-core max. conductor cross-section	4 mm²
Multi-core min. conductor cross-section with ferrule	0,34 mm²
Multi-core max. conductor cross-section with ferrule	4 mm²
2 Conductors Of The Same Cross Section Multi Core Twin Ferrule With Plastic Sleeve Min	1 mm²
Min. Stripping Length	9 mm
Max. Stripping Length	10 mm
Internal cylindrical indicator	A4

DIMENSIONS

Width	6 mm
Length	70,8 mm
Height Mr 35X75	44 mm
Height MR 35x15	51,5 mm