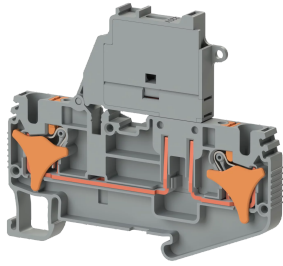


TERMINAL BLOCKS > PUSH-IN TYPE TERMINAL BLOCKS > FUSE TERMINALS



PRD 4SLD 220V AC/DC Grey

Stock Keeping Unit (SKU): 329419

4 mm² Push-in 2-pole Fuse Terminal Block

Commercial Information

Product Sales Code	329419
Package Unit	30 pcs.
Customs Tariff Number	853690950000

Technical Information

PRODUCT FEATURES	
Number of Connections	2
Color	Grey
Number of Levels	1
Insulation Material	PA
UL 94 Flammability Class	VO
Impulse Voltage Category	III
Insulation Material Group	I
Pollution Degree	3
Connection According to Standard	IEC 60947-7-3
Fire Protection In Railway Vehicles Din En 45545 2 R22 R23 R24 R26	HL 1 - HL 2 - HL 3
Continuous Operating Temperature max.	130 °C
Continuous Operating Temperature min.	-60 °C
Fuse	G / 5x20
Fuse Type	Glass

ELECTRICAL FEATURES

Nominal Impulse Voltage	6 Kv
Nominal Current	10 A (at 4 mm²) A
Nominal Voltage	220 V
Maximum Load Current	A

CONNECTION DATA

Connection Type	Push-in connection
Single-core min. conductor cross-section	0,08 mm²
Single-core max. conductor cross-section	6 mm²
Conductor Cross Section Awgkcmil Min	28 AWG
Conductor Cross Section Awgkcmil Max	10 AWG
Multi-core min. conductor cross-section	0,14 mm²
Multi-core max. conductor cross-section	4 mm²
Multi-core min. conductor cross-section with ferrule	0,14 mm²
Multi-core max. conductor cross-section with ferrule	4 mm²
Min. Stripping Length	8 mm
Max. Stripping Length	10 mm
Internal cylindrical indicator	A4

DIMENSIONS

Width	6,2 mm
Length	76,60 mm
Height Mr 35X75	64,80 mm
Height MR 35x15	72,30 mm