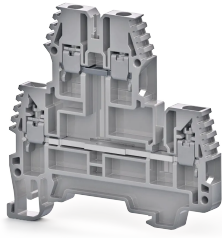


TERMINAL BLOCKS > SCREW TYPE TERMINAL BLOCKS > MULTILEVEL TERMINALS



PIK 2,5RD Grey

Stock Keeping Unit (SKU): 325249

Screw Type, 2,5 mm² 2 layer feed-through terminal block, push-in cross connection

Commercial Information

Product Sales Code	325249
Package Unit	100 pcs.
Customs Tariff Number	853690950000
Weight Per Unit Including Packaging	0.013 kg.

Technical Information

PRODUCT FEATURES	
Number of Connections	4
Color	Grey
Number of Levels	2
Insulation Material	PA
UL 94 Flammability Class	V2
Impulse Voltage Category	III
Insulation Material Group	I
Pollution Degree	3
Connection According to Standard	IEC 60947-7-1
Continuous Operating Temperature max.	120 °C
Continuous Operating Temperature min.	-55 °C

ELECTRICAL FEATURES	
Nominal Impulse Voltage	6 Kv

Nominal Current	24 A
Nominal Voltage	500 V
Maximum Load Current	28 A

CONNECTION DATA

Connection Type	Screw Connection
Single-core min. conductor cross-section	0,2 mm²
Single-core max. conductor cross-section	4 mm²
Conductor Cross Section Awgkcmil Min	24 AWG
Conductor Cross Section Awgkcmil Max	12 AWG
Multi-core min. conductor cross-section	0,2 mm²
Multi-core max. conductor cross-section	4 mm²
Multi-core min. conductor cross-section with ferrule	0,25 mm²
Multi-core max. conductor cross-section with ferrule	2,5 mm²
2 Conductors Of The Same Cross Section Multi Core Twin Ferrule With Plastic Sleeve Min	0,5 mm²
2 Conductors Of The Same Cross Section Multi Core Twin Ferrule With Plastic Sleeve Max	1,5 mm²
Min. Stripping Length	9 mm
Max. Stripping Length	10 mm
Internal cylindrical indicator	A3
Tightening Torque Min	0,4 Nm
Tightening Torque Max	0,6 Nm

DIMENSIONS

Width	5 mm
Length	64 mm
Height Mr 35X75	61,20 mm
Height MR 35x15	68,70 mm