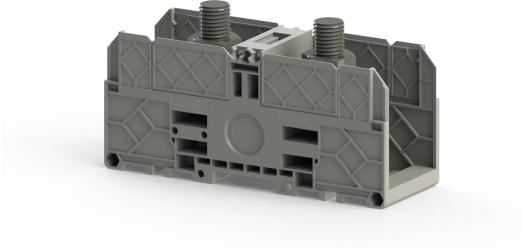


TERMINAL BLOCKS > BOLT TYPE TERMINAL BLOCKS > FEED THROUGH TERMINALS



PAK 300

Stock Keeping Unit (SKU): 313169

300mm² Bolt-Type Feed-Through Terminal Block

Commercial Information

Product Sales Code	313169
Package Unit	5 pcs.
Customs Tariff Number	853690950000
Weight Per Unit Including Packaging	0.536 kg.

Technical Information

PRODUCT FEATURES	
Number of Connections	2
Color	Bil.Grey
Number of Levels	1
Insulation Material	PA
UL 94 Flammability Class	V0
Impulse Voltage Category	3
Insulation Material Group	1
Pollution Degree	3
Connection According to Standard	IEC 60947-7-1
Fire Protection In Railway Vehicles Din En 45545 2 R22 R23 R24 R26	HL 1 - HL 2 - HL 3
Continuous Operating Temperature max.	130 °C
Continuous Operating Temperature min.	-60 °C

ELECTRICAL FEATURES

Nominal Impulse Voltage	8 Kv
Nominal Current	520 A
Nominal Voltage	1000 V

CONNECTION DATA

Connection Type	Bolt Connection
Tightening Torque Min	25 Nm
Tightening Torque Max	35 Nm
Hole Diameter Min	17 mm
Din 46234 Cable Lug Min	25 mm²
Din 46234 Cable Lug Max	240 mm²
Din 46235 Cable Lug Min	50 mm²
Din 46235 Cable Lug Max	300 mm²
Din 46234 Cable Lug Min	4 AWG
Din 46234 Cable Lug Max	500 kcmil
Din 46235 Cable Lug Min	1/10 AWG
Din 46235 Cable Lug Max	600 kcmil

DIMENSIONS

Width	55,00 mm
Length	163 mm
Height Mr 35X75	86 mm
Height MR 35x15	93,5 mm