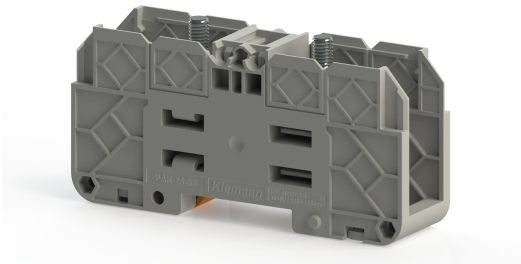


TERMINAL BLOCKS > BOLT TYPE TERMINAL BLOCKS > FEED THROUGH TERMINALS



PAK 25-35 Grey

Stock Keeping Unit (SKU): 313009

35mm² Bolt-Type Feed-Through Terminal Block

Commercial Information

Product Sales Code	313009
Package Unit	10 pcs.
Customs Tariff Number	853690950000
Weight Per Unit Including Packaging	0.1 kg.

Technical Information

PRODUCT FEATURES	
Number of Connections	2
Color	Bil.Grey
Number of Levels	1
Insulation Material	PA
UL 94 Flammability Class	Vo
Impulse Voltage Category	3
Pollution Degree	3
Connection According to Standard	IEC 60947-7-1
Fire Protection In Railway Vehicles Din En 45545 2 R22 R23 R24 R26	HL 1 - HL 2 - HL 3
Continuous Operating Temperature max.	130 °C
Continuous Operating Temperature min.	-60 °C

ELECTRICAL FEATURES	
Nominal Impulse Voltage	8 Kv Kv

Nominal Current	125) A
Nominal Voltage	1000 V

CONNECTION DATA

Connection Type	Bolt Connection
Tightening Torque Min	3 Nm
Tightening Torque Max	6 Nm
Hole Diameter Min	6,5 mm
Din 46234 Cable Lug Min	2,5 mm²
Din 46234 Cable Lug Max	50 mm²
Din 46235 Cable Lug Min	6 mm²
Din 46235 Cable Lug Max	35 mm²
Din 46234 Cable Lug Min	14 AWG
Din 46234 Cable Lug Max	0 kcmil
Din 46235 Cable Lug Min	10 AWG
Din 46235 Cable Lug Max	2 kcmil

DIMENSIONS

Width	27,00 mm
Length	107 mm
Height Mr 35X75	55,5 mm
Height MR 35x15	63 mm