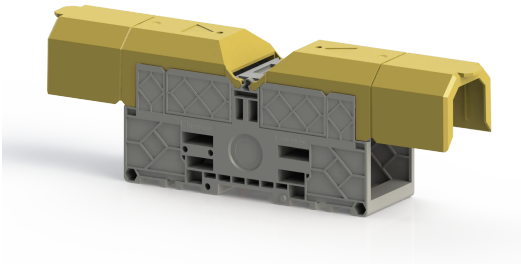


TERMINAL BLOCKS > BOLT TYPE TERMINAL BLOCKS > FEED THROUGH TERMINALS



## PAK 185-240 KK Grey

Stock Keeping Unit (SKU): 313139

240mm<sup>2</sup> Bolt-Type Feed-Through Terminal Block with Protection Cover

### Commercial Information

Product Sales Code	<b>313139</b>
Package Unit	<b>5 pcs.</b>
Customs Tariff Number	<b>853690950000</b>
Weight Per Unit Including Packaging	<b>0.496 kg.</b>

### Technical Information

PRODUCT FEATURES	
Number of Connections	<b>2</b>
Color	<b>Bil.Grey</b>
Number of Levels	<b>1</b>
Insulation Material	<b>PA</b>
UL 94 Flammability Class	<b>Vo</b>
Impulse Voltage Category	<b>3</b>
Insulation Material Group	<b>1</b>
Pollution Degree	<b>3</b>
Connection According to Standard	<b>IEC 60947-7-1</b>
Fire Protection In Railway Vehicles Din En 45545 2 R22 R23 R24 R26	<b>HL 1 - HL 2 - HL 3</b>
Continuous Operating Temperature max.	<b>130 °C</b>
Continuous Operating Temperature min.	<b>-60 °C</b>

### ELECTRICAL FEATURES

Nominal Impulse Voltage	<b>8 Kv Kv</b>
Nominal Current	<b>415) A</b>
Nominal Voltage	<b>1000 V</b>

## CONNECTION DATA

Connection Type	<b>Bolt Connection</b>
Tightening Torque Min	<b>14 Nm</b>
Tightening Torque Max	<b>30 Nm</b>
Hole Diameter Min	<b>13 mm</b>
Din 46234 Cable Lug Min	<b>10 mm<sup>2</sup></b>
Din 46234 Cable Lug Max	<b>240 mm<sup>2</sup></b>
Din 46235 Cable Lug Min	<b>25 mm<sup>2</sup></b>
Din 46235 Cable Lug Max	<b>240 mm<sup>2</sup></b>
Din 46234 Cable Lug Min	<b>8 AWG</b>
Din 46234 Cable Lug Max	<b>500 kcmil</b>
Din 46235 Cable Lug Min	<b>4 AWG</b>
Din 46235 Cable Lug Max	<b>500 kcmil</b>

## DIMENSIONS

Width	<b>55,00 mm</b>
Length	<b>280,00 mm</b>
Height Mr 35X75	<b>90,30 mm</b>
Height MR 35x15	<b>97,80 mm</b>