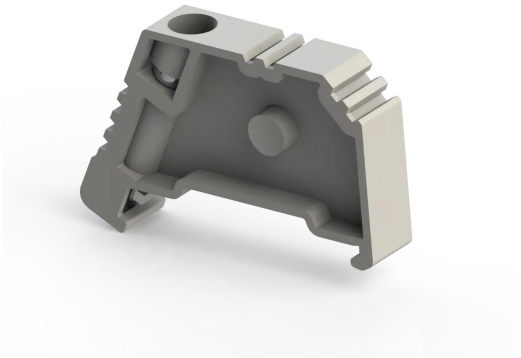


TERMINAL BLOCKS > ACCESSORIES > END STOP



## KD 3 Grey

**Stock Keeping Unit (SKU):** 495049

*End Bracket*

### Commercial Information

|                                     |                     |
|-------------------------------------|---------------------|
| Product Sales Code                  | <b>495049</b>       |
| Package Unit                        | <b>100 pcs.</b>     |
| Customs Tariff Number               | <b>392690979018</b> |
| Weight Per Unit Including Packaging | <b>0.0054 kg.</b>   |

### Technical Information

#### PRODUCT FEATURES

|                                       |                 |
|---------------------------------------|-----------------|
| Color                                 | <b>Grey</b>     |
| Insulation Material                   | <b>PA</b>       |
| UL 94 Flammability Class              | <b>V2</b>       |
| Continuous Operating Temperature max. | <b>120 °C</b>   |
| Continuous Operating Temperature min. | <b>-55 °C</b>   |
| Rail Tightening Torque                | <b>06-08 Nm</b> |

#### DIMENSIONS

|                 |                |
|-----------------|----------------|
| Width           | <b>8 mm</b>    |
| Length          | <b>45 mm</b>   |
| Height Mr 35X75 | <b>30 mm</b>   |
| Height MR 35x15 | <b>37,5 mm</b> |