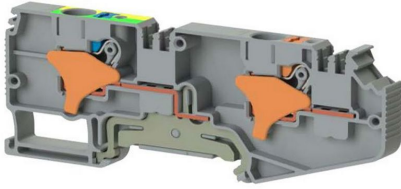


TERMINAL BLOCKS

DS 6Tx6F K1 (Grey)

Stock Keeping Unit (SKU): 328869

6 mm² 1-phase + 1-ground 2-pole main line terminal block.



Commercial Information

Product Sales Code	328869
Package Unit	16 pcs.
Customs Tariff Number	853690950000

Technical Information

PRODUCT FEATURES	
Number of Connections	1
Color	Sar?-Ye?il
Number of Levels	1
Insulation Material	PA
UL 94 Flammability Class	V0
Impulse Voltage Category	III
Insulation Material Group	I
Pollution Degree	3
Connection According to Standard	IEC 60947-7-1 / IEC 60947-7-2
Fire Protection In Railway Vehicles Din En 45545 2 R22 R23 R24 R26	HL 1 - HL 2 - HL 3
Continuous Operating Temperature max.	130 °C
Continuous Operating Temperature min.	-60 °C

ELECTRICAL FEATURES

Nominal Impulse Voltage	6 Kv
-------------------------	-------------

CONNECTION DATA

Connection Type	Push-In Baglanti
-----------------	-------------------------

Single-core min. conductor cross-section	0,2 mm²
--	---------------------------

Single-core max. conductor cross-section	10 mm²
--	--------------------------

Conductor Cross Section Awgkcmil Min	24 AWG
--------------------------------------	---------------

Conductor Cross Section Awgkcmil Max	8 AWG
--------------------------------------	--------------

Multi-core min. conductor cross-section	0,2 mm²
---	---------------------------

Multi-core max. conductor cross-section	6 mm²
---	-------------------------

Multi-core min. conductor cross-section with ferrule	0,25 mm²
--	----------------------------

Multi-core max. conductor cross-section with ferrule	6 mm²
--	-------------------------

Min. Stripping Length	10 mm
-----------------------	--------------

Max. Stripping Length	12 mm
-----------------------	--------------

Internal cylindrical indicator	A5
--------------------------------	-----------

DIMENSIONS

Width	8,0 mm
-------	---------------

Length	103,27 mm
--------	------------------

Height Mr 35X75	41,95 mm
-----------------	-----------------

Height MR 35x15	49,45 mm
-----------------	-----------------