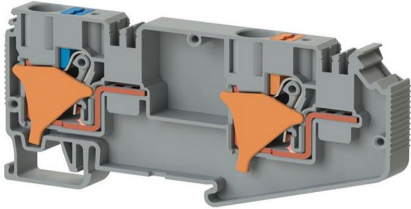


TERMINAL BLOCKS

DS 10Fx10F K2,5 (GreyI)

Stock Keeping Unit (SKU): 328909

10 mm² 2-phase 2-pole main line terminal block



Commercial Information

Product Sales Code	328909
Package Unit	50 pcs.
Customs Tariff Number	853690950000

Technical Information

PRODUCT FEATURES	
Number of Connections	2
Color	Grey
Number of Levels	1
Insulation Material	PA
UL 94 Flammability Class	V0
Impulse Voltage Category	III
Insulation Material Group	I
Pollution Degree	3
Connection According to Standard	IEC 60947-7-1
Continuous Operating Temperature max.	130 °C
Continuous Operating Temperature min.	-60 °C

ELECTRICAL FEATURES

Nominal Impulse Voltage	6 Kv
Nominal Current	57 A (at 10 mm²) A
Nominal Voltage	500 V
Maximum Load Current	65 A (with 16 mm² conductor cross section) 6 Kv A

CONNECTION DATA

Connection Type	Push-in connection
Single-core min. conductor cross-section	0,2 mm²
Single-core max. conductor cross-section	16 mm²
Conductor Cross Section Awgkcmil Min	24 AWG
Conductor Cross Section Awgkcmil Max	6 AWG
Multi-core min. conductor cross-section	0,2 mm²
Multi-core max. conductor cross-section	10 mm²
Multi-core min. conductor cross-section with ferrule	0,25 mm²
Multi-core max. conductor cross-section with ferrule	10 mm²
2 Conductors Of The Same Cross Section Multi Core Twin Ferrule With Plastic Sleeve Min	2,5 mm²
Min. Stripping Length	16 mm
Max. Stripping Length	18 mm
Internal cylindrical indicator	A6

DIMENSIONS

Width	10 mm
Length	85,10 mm
Height Mr 35X75	106,17 mm
Height MR 35x15	57,20 mm