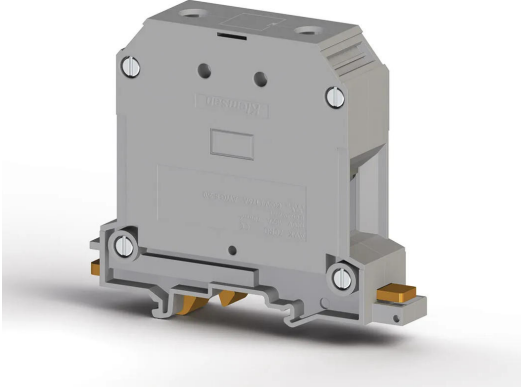


TERMINAL BLOCKS > SCREW TYPE TERMINAL BLOCKS > FEED THROUGH TERMINALS



AVK 70RD Grey

Stock Keeping Unit (SKU): 304490

70mm² High Current Screw-Type Feed-Through Terminal Block

Commercial Information

| | |
|-------------------------------------|---------------------|
| Product Sales Code | 304490 |
| Package Unit | 10 pcs. |
| Customs Tariff Number | 853690950000 |
| Weight Per Unit Including Packaging | 0.148 kg. |

Technical Information

PRODUCT FEATURES

| | |
|---------------------------------------|----------------------|
| Number of Connections | 2 |
| Color | Grey |
| Number of Levels | 1 |
| Insulation Material | PA |
| UL 94 Flammability Class | V2 |
| Impulse Voltage Category | III |
| Insulation Material Group | I |
| Pollution Degree | 3 |
| Connection According to Standard | IEC 60947-7-1 |
| Continuous Operating Temperature max. | 120 °C |
| Continuous Operating Temperature min. | -55 °C |

ELECTRICAL FEATURES

| | |
|-------------------------|---------------|
| Nominal Impulse Voltage | 8 Kv |
| Nominal Current | 192 A |
| Nominal Voltage | 1000 V |
| Maximum Load Current | 192 A |

CONNECTION DATA

| | |
|--|--------------------------|
| Connection Type | Screw Connection |
| Single-core min. conductor cross-section | 16 mm² |
| Single-core max. conductor cross-section | 70 mm² |
| Conductor Cross Section Awgkcmil Min | 6 AWG |
| Conductor Cross Section Awgkcmil Max | 2/0 AWG |
| Multi-core min. conductor cross-section | 16 mm² |
| Multi-core max. conductor cross-section | 70 mm² |
| Multi-core min. conductor cross-section with ferrule | 16 mm² |
| Multi-core max. conductor cross-section with ferrule | 70 mm² |
| 2 Conductors Of The Same Cross Section Multi Core Twin Ferrule With Plastic Sleeve Min | 16 mm² |
| 2 Conductors Of The Same Cross Section Multi Core Twin Ferrule With Plastic Sleeve Max | 25 mm² |
| Min. Stripping Length | 22 mm |
| Max. Stripping Length | 24 mm |
| Internal cylindrical indicator | A11 |
| Tightening Torque Min | 6 Nm |
| Tightening Torque Max | 12 Nm |

DIMENSIONS

| | |
|-----------------|-----------------|
| Width | 22 mm |
| Length | 94,60 mm |
| Height Mr 35X75 | 81 mm |
| Height MR 35x15 | 88,5 mm |
| Height Mr 32 | 85,60 mm |