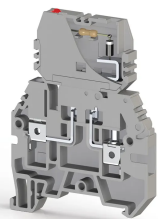


TERMINAL BLOCKS > SCREW TYPE TERMINAL BLOCKS > FUSE TERMINALS



## ASK 3FLD 24VAC Grey

**Stock Keeping Unit (SKU):** 354219

*Screw Type, 4 mm<sup>2</sup>, fuse terminal block with LED*

### Commercial Information

|                                     |                       |
|-------------------------------------|-----------------------|
| Product Sales Code                  | <b>354219</b>         |
| Package Unit                        | <b>30 pcs.</b>        |
| Customs Tariff Number               | <b>853690950000</b>   |
| Weight Per Unit Including Packaging | <b>0.01806667 kg.</b> |

### Technical Information

| PRODUCT FEATURES                      |                        |
|---------------------------------------|------------------------|
| Number of Connections                 | <b>2</b>               |
| Color                                 | <b>Grey</b>            |
| Number of Levels                      | <b>1</b>               |
| Insulation Material                   | <b>PA</b>              |
| UL 94 Flammability Class              | <b>V2</b>              |
| Impulse Voltage Category              | <b>III</b>             |
| Insulation Material Group             | <b>I</b>               |
| Pollution Degree                      | <b>3</b>               |
| Connection According to Standard      | <b>IEC 60947-7-3</b>   |
| Continuous Operating Temperature max. | <b>120 °C</b>          |
| Continuous Operating Temperature min. | <b>-55 °C</b>          |
| Fuse                                  | <b>G / 5X20 - 5X25</b> |
| Fuse Type                             | <b>Glass</b>           |

### ELECTRICAL FEATURES

|                         |             |
|-------------------------|-------------|
| Nominal Impulse Voltage | <b>6 Kv</b> |
| Nominal Voltage         | <b>24 V</b> |
| Maximum Load Current    | <b>10 A</b> |
| Nominal Current In Fuse | <b>10 A</b> |

## CONNECTION DATA

|                                                                                        |                            |
|----------------------------------------------------------------------------------------|----------------------------|
| Connection Type                                                                        | <b>Screw Connection</b>    |
| Single-core min. conductor cross-section                                               | <b>0,2 mm<sup>2</sup></b>  |
| Single-core max. conductor cross-section                                               | <b>6 mm<sup>2</sup></b>    |
| Conductor Cross Section Awgkcmil Min                                                   | <b>24 AWG</b>              |
| Conductor Cross Section Awgkcmil Max                                                   | <b>10 AWG</b>              |
| Multi-core min. conductor cross-section                                                | <b>0,2 mm<sup>2</sup></b>  |
| Multi-core max. conductor cross-section                                                | <b>6 mm<sup>2</sup></b>    |
| Multi-core min. conductor cross-section with ferrule                                   | <b>0,25 mm<sup>2</sup></b> |
| Multi-core max. conductor cross-section with ferrule                                   | <b>4 mm<sup>2</sup></b>    |
| 2 Conductors Of The Same Cross Section Multi Core Twin Ferrule With Plastic Sleeve Min | <b>0,5 mm<sup>2</sup></b>  |
| 2 Conductors Of The Same Cross Section Multi Core Twin Ferrule With Plastic Sleeve Max | <b>2,5 mm<sup>2</sup></b>  |
| Min. Stripping Length                                                                  | <b>9 mm</b>                |
| Max. Stripping Length                                                                  | <b>10 mm</b>               |
| Internal cylindrical indicator                                                         | <b>A4</b>                  |
| Tightening Torque Min                                                                  | <b>0,5 Nm</b>              |
| Tightening Torque Max                                                                  | <b>0,8 Nm</b>              |

## DIMENSIONS

|                 |                |
|-----------------|----------------|
| Width           | <b>6,2 mm</b>  |
| Length          | <b>54,1 mm</b> |
| Height Mr 35X75 | <b>72,5 mm</b> |
| Height MR 35x15 | <b>80 mm</b>   |