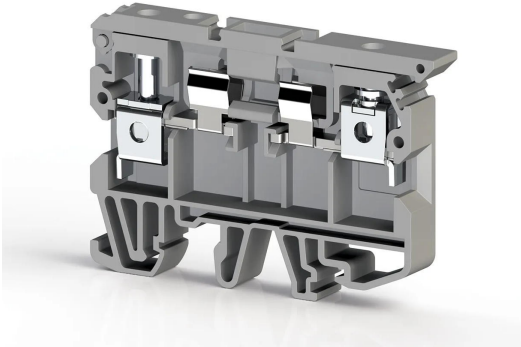


TERMINAL BLOCKS > SCREW TYPE TERMINAL BLOCKS > FUSE TERMINALS



## ASK 2S

**Stock Keeping Unit (SKU):** 351109

*Screw Type, 6 mm<sup>2</sup>, fuse terminal block*

### Commercial Information

Product Sales Code	<b>351109</b>
Package Unit	<b>50 pcs.</b>
Customs Tariff Number	<b>853690950000</b>
Weight Per Unit Including Packaging	<b>0.01774 kg.</b>

### Technical Information

PRODUCT FEATURES	
Number of Connections	<b>2</b>
Color	<b>Grey</b>
Number of Levels	<b>1</b>
Insulation Material	<b>PA</b>
UL 94 Flammability Class	<b>V2</b>
Impulse Voltage Category	<b>III</b>
Insulation Material Group	<b>I</b>
Pollution Degree	<b>3</b>
Connection According to Standard	<b>IEC 60947-7-3</b>
Continuous Operating Temperature max.	<b>120 °C</b>
Continuous Operating Temperature min.	<b>-55 °C</b>
Fuse	<b>G / 5x20 - 5x25</b>
Fuse Type	<b>Cam / Glass</b>

## ELECTRICAL FEATURES

Nominal Current **6.3 A**

Nominal Voltage **500 V**

## CONNECTION DATA

Connection Type **Screw Connection**

Single-core min. conductor cross-section **0.2 mm<sup>2</sup>**

Single-core max. conductor cross-section **10 mm<sup>2</sup>**

Conductor Cross Section Awgkcmil Min **24 AWG**

Conductor Cross Section Awgkcmil Max **8 AWG**

Multi-core min. conductor cross-section **0.2 mm<sup>2</sup>**

Multi-core max. conductor cross-section **10 mm<sup>2</sup>**

Multi-core min. conductor cross-section with ferrule **0,25 mm<sup>2</sup>**

Multi-core max. conductor cross-section with ferrule **6 mm<sup>2</sup>**

2 Conductors Of The Same Cross Section Multi Core Twin Ferrule With Plastic Sleeve Min **0,5 mm<sup>2</sup>**

2 Conductors Of The Same Cross Section Multi Core Twin Ferrule With Plastic Sleeve Max **4 mm<sup>2</sup>**

Min. Stripping Length **10 mm**

Max. Stripping Length **12 mm**

Internal cylindrical indicator **B5**

Tightening Torque Min **0.8 Nm**

Tightening Torque Max **1.2 Nm**

## DIMENSIONS

Width **8 mm**

Length **64.2 mm**

Height Mr 35X75 **45 mm**

Height MR 35x15 **52.5 mm**

Height Mr 32 **49.6 mm**